



# PACIFIC SPILL SUPPLY

## PRODUCT CATALOGUE

SALES/ORDERING: 604-244-7745

CALL 24 HRS 1-855-269-7745 (1-855-ANY-SPIL)

[www.pacificspillsupply.com](http://www.pacificspillsupply.com)



ABSORBENTS



SPILL KITS



DRAIN AND  
STORMWATER  
PRODUCTS



SECONDARY  
CONTAINMENT



PACIFIC SPILL SUPPLY

TO PLACE AN ORDER CALL:

604-244-7745

TOLL FREE : 1-855-269-7745

(1-855-ANY-SPIL)

EMAIL:

info@pacificspillsupply.com

VISIT US:

www.pacificspillsupply.com

@PacSpillSupply



**WANT TO BECOME  
A DISTRIBUTOR?  
GET IN TOUCH**

# ABOUT PACIFIC SPILL SUPPLY

## OUR ROOTS

Our story starts back in the late 1990's with the establishment of our parent company, Canadyne Technologies Inc., as a manufacturer of marine oil spill response equipment. Today, Canadyne has grown to become the largest oil containment boom manufacturer in Canada, and is a trusted and prime supplier of pollution control equipment to over 40 countries worldwide.

Pacific Spill Supply was established in 2012 as a direct response to a demand from Canadyne's customers who were looking for a reliable source of high quality industrial and spill control products at reasonable prices.

## GROWING INTO OUR OWN

In response to increased demand from distributors for a wider variety of product and increased levels of inventory – Pacific Spill Supply has now expanded into its own brand new facility in Richmond, BC – here we stock oil absorbents, custom spill kits, secondary containment, stormwater management and related products.

## MOVING FORWARD

Please take a minute to review the catalog, where you'll find some new products to complement our already extensive offering.

Thanks again for your continued support – we look forward to a bright future.

*John and Leo*

**John Jessup / Leo Rimanic**

# TABLE OF CONTENTS

1



## ABSORBENTS

Pads and Rolls Pages 6-15  
Socks and Booms Pages 16-17  
Pillows Page 18  
Sweeps and Snares Page 19  
Rugs and Specialty Matting Page 20-23  
Rags and Wiping Products Page 24  
Accessories Page 25

2



## GRANULARS & NEUTRALIZERS

Inorganic Page 26  
Organic Page 27  
Acid Neutralizers Page 28

3



## SPILL KITS

Introduction Page 29  
Spill Customization Page 30  
Bagged Spill Kits Pages 31-32  
Pail / Bucket Kits Page 33  
Drum and Mobile Bin Kits Pages 34-35  
Refill and Accessory Items Page 36

4



## DRAIN & STORMWATER MANAGEMENT

Drain Seals Page 37  
Spill Berms Page 38  
Drain and Gutter Guards  
Pages 39-40

5



## SPILL CONTAINMENT

Utility Trays Page 41  
Spill Pallets Pages 42-44  
Hard Tops Page 45

6



## SECONDARY CONTAINMENT

Foam Side Wall Berms Pages 46  
L Rod Berms Page 47  
Rapid Rise Berm Page 48  
Compact Wall Berm Page 49

7



## FLEXIBLE STORAGE

Foldable Frames Page 50  
Collapsible Frames Page 51

8



## MARINE SPILL PRODUCTS

Spill Containment Boom  
Pages 52-53

9



## REGULATIONS

Summary of Critical Regulations  
Pages 54-57

10

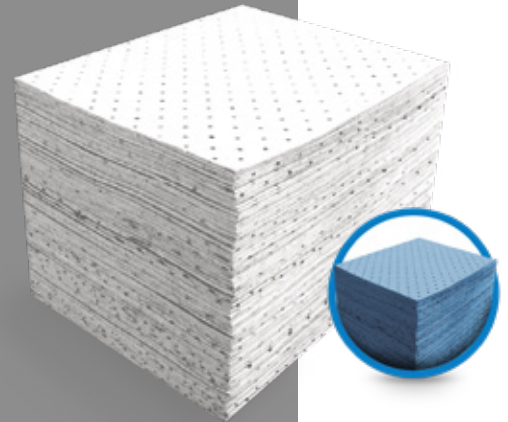


## PART NUMBER INDEX

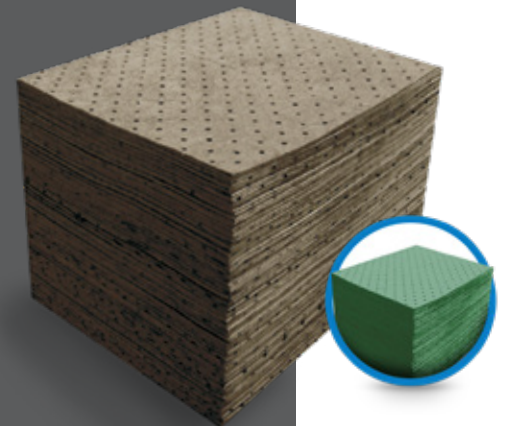
Part Number Index Pages 58-61

# ABSORBENTS

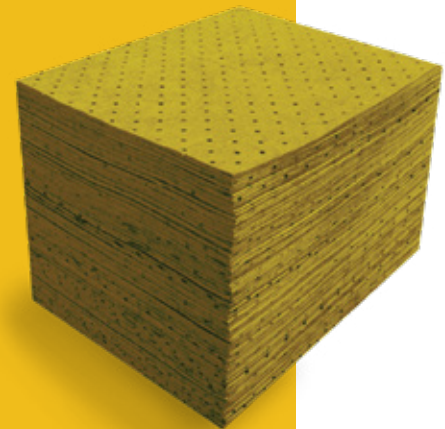
**Oil Only**



**Universal**



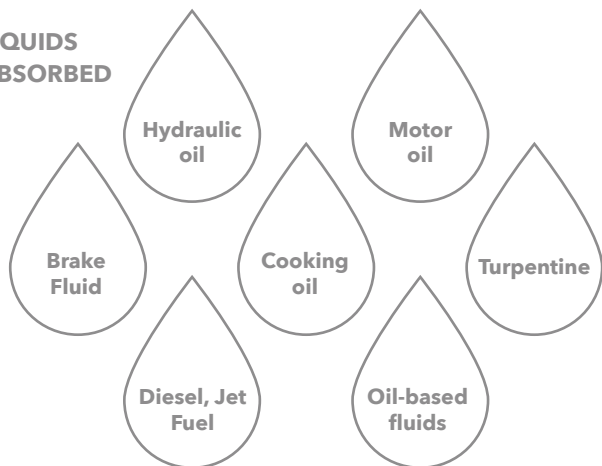
**Chemical**





Selecting the right absorbent for the job makes a big difference. Proper product selection can make your employees' jobs easier, create a safer work environment and save you money.

#### LIQUIDS ABSORBED



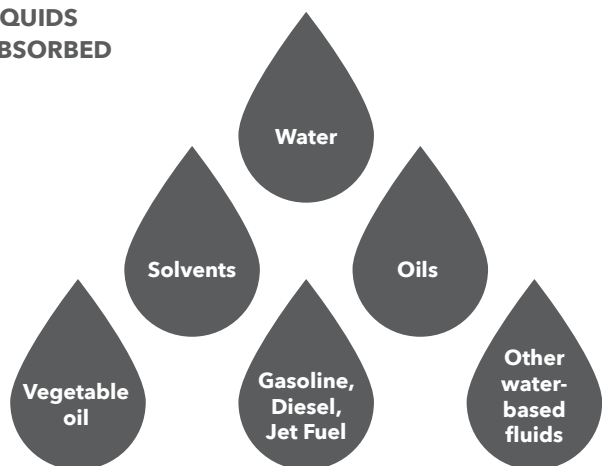
## Oil Only (Oils, Fuels, Lubricants)

Use for all oil and other petroleum-based liquid spills such as fuels, lubricants, mineral oils and vegetable oils.

Will float on water and only absorb oil.

Also available in **BLUE** (high visibility in snow)

#### LIQUIDS ABSORBED

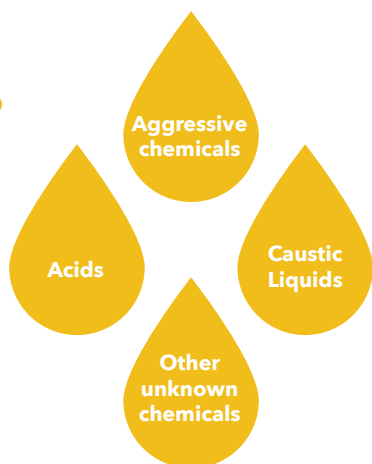


## Universal (Oils, Coolants, Solvents, Water)

Use for all types of liquids (water-based and oil-based). Ideal for use in industrial or factory environment where there are a variety of liquids. Use around machinery, under leaky pipes, in messy high traffic areas, or for general maintenance.

Also available in **GREEN** (commonly used by medical professionals)

#### LIQUIDS ABSORBED



## Chemical (Acids & Caustics, Unknown Liquids)

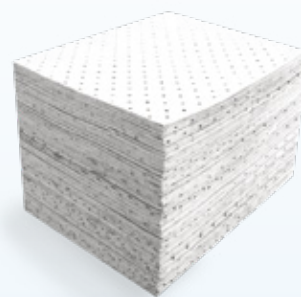
Can be used for all water-based and oil-based fluids, but specifically designed for aggressive liquids such as acids and bases. Yellow safety colour indicates immediate hazards are present.

# ABSORBENTS

BEST SELLERS

## SORBENT PAD SELECTION GUIDE

OIL ONLY



STANDARD		
BASIC HEAVY WEIGHT OIL ONLY (WHITE) - 100's	BASIC MEDIUM WEIGHT OIL ONLY (WHITE) - 100's	BASIC SINGLE WEIGHT OIL ONLY (WHITE) - 200's
<b>PSP100-121</b> <b>A</b>	<b>PSP100-176</b> <b>A</b>	<b>PSP100-002</b> <b>A</b>
<ul style="list-style-type: none"> <li>Heavy Weight High Loft</li> <li>Single Ply, 15" x 18"</li> <li>100 pads/bale</li> <li>42 bales/skid</li> <li>Dimpled and Perforated</li> </ul>	<ul style="list-style-type: none"> <li>Medium Weight</li> <li>Single Ply, 15" x 18"</li> <li>100 pads / bale</li> <li>42 bales/skid</li> <li>Non-Dimpled, Non-Perforated</li> </ul>	<ul style="list-style-type: none"> <li>Single Weight</li> <li>Single Ply, 15" x 18"</li> <li>200 pads/bale</li> <li>36 bales/skid</li> <li>Non Dimpled, Non-Perforated</li> </ul>
PREMIUM		
PREMIUM HEAVY WEIGHT OIL ONLY (WHITE) - 100's	PREMIUM MEDIUM WEIGHT OIL ONLY (WHITE) - 100's	PREMIUM SINGLE WEIGHT OIL ONLY (WHITE) - 200's
<b>PSP100-032</b> <b>A</b>	<b>PSP100-070</b> <b>A</b>	<b>PSP100-039</b> <b>A</b>
<ul style="list-style-type: none"> <li>Heavy Weight Composite</li> <li>3 ply, 15" x 18"</li> <li>100 pads/bale</li> <li>36 bales/skid</li> <li>Dimpled and Perforated</li> <li>SpunBond / MB / FineFiber</li> </ul>	<ul style="list-style-type: none"> <li>Medium Weight Composite</li> <li>3 Ply, 15" x 18"</li> <li>100 pads/bale</li> <li>36 bales/skid</li> <li>Dimpled and Perforated</li> <li>SpunBond / MB / SpunBond</li> </ul>	<ul style="list-style-type: none"> <li>Single Weight</li> <li>Single Ply, 15" x 18"</li> <li>200 pads/bale</li> <li>36 bales/skid</li> <li>Dimpled and Perforated</li> <li>Smooth DOUBLE DRUM Finish</li> </ul>

### How do I decide between the STANDARD and the PREMIUM line?

Our standard line of pads are single ply construction and will provide good durability and absorbent capacity.

Our premium line of pads are 3-ply construction - the top and bottom sheets are non-linting - spunbond is abrasion resistant for foot traffic, and the fine fiber is grippy for smooth surfaces.

**A** Very Common Item - Good Stock    **B** Common Item - Moderate Stock    **C** Less Common Item - Call for Availability

# SORBENT PAD SELECTION GUIDE

## UNIVERSAL



STANDARD		
BASIC HEAVY WEIGHT UNIVERSAL (GREY) - 100's	BASIC MEDIUM WEIGHT UNIVERSAL (GREY) - 100's	BASIC SINGLE WEIGHT UNIVERSAL (GREY) - 200's
<b>PSP100-120</b> <b>A</b>	<b>PSP100-177</b> <b>A</b>	<b>PSP100-027</b> <b>A</b>
<ul style="list-style-type: none"> <li>Heavy Weight High Loft</li> <li>Single Ply, 15" x 18"</li> <li>100 pads/bale</li> <li>42 bales/skid</li> <li>Dimpled and Perforated</li> </ul>	<ul style="list-style-type: none"> <li>Medium Weight</li> <li>Single Ply, 15" x 18"</li> <li>100 pads / bale</li> <li>42 bales/skid</li> <li>Non Dimpled, Non-Perforated</li> </ul>	<ul style="list-style-type: none"> <li>Single Weight</li> <li>Single Ply, 15" x 18"</li> <li>200 pads/bale</li> <li>36 bales/skid</li> <li>Dimpled and Perforated</li> </ul>
PREMIUM		
PREMIUM HEAVY WEIGHT UNIVERSAL (GREY) - 100's	PREMIUM MEDIUM WEIGHT UNIVERSAL (GREY) - 100's	PREMIUM SINGLE WEIGHT UNIVERSAL (GREY) - 200's
<b>PSP100-006</b> <b>A</b>	<b>PSP100-113</b> <b>A</b>	<b>PSP100-035</b> <b>A</b>
<ul style="list-style-type: none"> <li>Heavy Weight Composite</li> <li>3 ply, 15" x 18"</li> <li>100 pads/bale</li> <li>36 bales/skid</li> <li>Dimpled and Perforated</li> <li>SpunBond / MB / FineFiber</li> </ul>	<ul style="list-style-type: none"> <li>Medium Weight Composite</li> <li>3 Ply, 15" x 18"</li> <li>100 pads/bale</li> <li>36 bales/skid</li> <li>Dimpled and Perforated</li> <li>FineFiber / MB / FineFiber</li> </ul>	<ul style="list-style-type: none"> <li>Single Weight</li> <li>Single Ply, 15" x 18"</li> <li>200 pads/bale</li> <li>36 bales/skid</li> <li>Dimpled and Perforated</li> <li>SpunBond / MB / FineFiber</li> </ul>

### How do I decide between the STANDARD and the PREMIUM line?

Our standard line of pads are single ply construction and will provide good durability and absorbent capacity.

Our premium line of pads are 3-ply construction - the top and bottom sheets are non-linting - spunbond is abrasion resistant for foot traffic, and the fine fiber is grippy for smooth surfaces.

**A** Very Common Item - Good Stock    **B** Common Item - Moderate Stock    **C** Less Common Item - Call for Availability

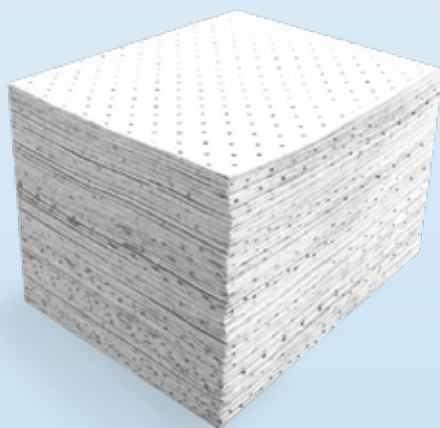
# ABSORBENTS

## OIL ONLY PADS STANDARD LINE (1 PLY)

Our standard line of meltblown (MB) white oil-only pads **absorbs hydrocarbon-based fluids and repels water.**

These pads are most commonly used outdoors to absorb oil-based spills, and for common everyday maintenance applications (oil leaks, around machinery). These pads will float on water to absorb marine oil spills and they are supplied in varying weights for a customized application and value priced solution. Bonded pads help to lower the lint, perforations help to reduce waste.

SKU	PSP100-121	PSP100-176	PSP100-180	PSP100-002
Category	Pad	Pad	Pad	Pad
Class	<b>Oil Only</b>	<b>Oil Only</b>	<b>Oil Only</b>	<b>Oil Only</b>
Stock Unit	Bale	Bale	Bale	Bale
Qty Per Unit	<b>100</b>	<b>100</b>	<b>100</b>	<b>200</b>
Colour	White	White	White	White
Weight	<b>Heavy</b>	<b>Medium</b>	<b>Economy</b>	<b>Single</b>
Construction	1-ply MB	1-ply MB	1-ply MB	1-ply MB
Features	Perforated Bonded	Perforated Bonded	Standard	Standard
Unit Dims	15" x 18"	15" x 18"	15" x 18"	15" x 18"
# Per Pallet	42	42	60	36
Pallet Dims, Weight	40" x 48" x 80", 450 lbs	40" x 48" x 77", 350 lbs	40" x 48" x 75", 400 lbs	40" x 48" x 81", 460 lbs
Packaging	Poly Bag	Poly Bag	Poly Bag	Poly Bag
Availability	<b>A</b>	<b>A</b>	<b>A</b>	<b>A</b>



**A** Very Common Item - Good Stock

**B** Common Item - Moderate Stock

**C** Less Common Item - Call for Availability



# OIL ONLY PADS PREMIUM LINE (3 PLY)

To complement our line of standard single ply pads we offer a premium line of composite pads which feature 3-ply construction. The highly absorbent meltblown core (MB) is bonded on both sides with spun-bond polypropylene and/or fine fiber polypropylene. This renders the pad into a low-linting, highly durable finished product.

**Spunbond (S)** polypropylene is an exceptionally strong, ultra-light non-woven which is durable and has a high tensile strength. Lint free and with a slick texture, these pads are great for wiping applications, including removing grease from hands.

**Fine Fiber (F)** polypropylene is a soft, non-linting super absorbent fiber that will absorb quickly, remove sheen from plant floors, and also provide a tacky surface to give a gripping characteristic.

All premium pads are perforated to reduce waste. [Also available in BLUE \(high visibility in snow\).](#)

SKU	PSP100-032	PSP100-070	PSP100-039	PSP100-081	PSP100-140
Category	Pad	Pad	Pad	Pad	Pad
Class	<b>Oil Only</b>	<b>Oil Only</b>	<b>Oil Only</b>	<b>Oil Only</b>	<b>Oil Only</b>
Stock Unit	Bale	Bale	Bale	Bale	Bale
Qty Per Unit	<b>100</b>	<b>100</b>	<b>200</b>	<b>100</b>	<b>100</b>
Colour	White	White	White	Blue	Blue
Weight	<b>Heavy</b>	<b>Medium</b>	<b>Single</b>	<b>Heavy</b>	<b>Medium</b>
Construction	3-ply MB	3-ply MB	Double Drum	3-ply MB	3-ply MB
Features	*SMF	*SMS	N/A	*SMF	*SMF
Unit Dims	15" x 18"	15" x 18"	15" x 18"	15" x 18"	15" x 18"
# Per Pallet	36	36	36	36	36
Pallet Dims, Weight	40" x 48" x 81", 410 lbs	40" x 48" x 75", 375 lbs	40" x 48" x 85", 500 lbs	40" x 48" x 75", 400 lbs	40" x 48" x 65", 400 lbs
Packaging	Poly Bag	Poly Bag	Poly Bag	Poly Bag	Poly Bag
Availability	<b>A</b>	<b>A</b>	<b>A</b>	<b>B</b>	<b>C</b>

\*SMF = SPUNBOND / MELTBLOWN / FINE FIBER

\*SMS = SPUNBOND / MELTBLOWN / SPUNBOND

**A** Very Common Item - Good Stock

**B** Common Item - Moderate Stock

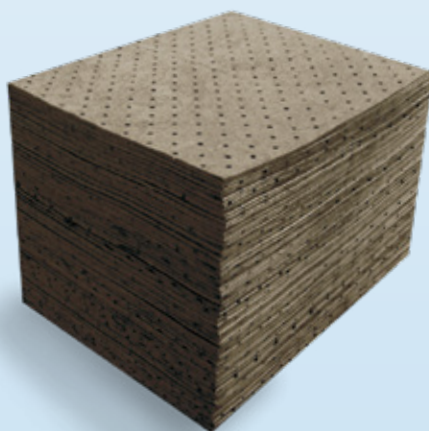
**C** Less Common Item - Call for Availability

# ABSORBENTS

## UNIVERSAL PADS STANDARD LINE (1 PLY)

Our standard line of meltblown (MB) **grey universal pads absorbs all liquids and fluids**. These pads are most commonly used in industrial or production facilities. Fast wicking and supplied in different weights to suit all applications and budgets. Bonded pads help to lower the lint, perforations help to reduce waste.

SKU	PSP100-120	PSP100-177	PSP100-181	PSP100-027
Category	Pad	Pad	Pad	Pad
Class	<b>Universal</b>	<b>Universal</b>	<b>Universal</b>	<b>Universal</b>
Stock Unit	Bale	Bale	Bale	Bale
Qty Per Unit	<b>100</b>	<b>100</b>	<b>100</b>	<b>200</b>
Colour	Grey	Grey	Grey	Grey
Weight	<b>Heavy</b>	<b>Medium</b>	<b>Economy</b>	<b>Single</b>
Construction	1-ply MB	1-ply MB	1-ply MB	1-ply MB
Features	Perforated Bonded	Perforated Bonded	Standard	Standard
Unit Dims	15" x 18"	15" x 18"	15" x 18"	15" x 18"
# Per Pallet	42	42	60	36
Pallet Dims, Weight	40" x 48" x 80", 400 lbs	40" x 48" x 77", 300 lbs	40" x 48" x 75", 400 lbs	40" x 48" x 80", 460 lbs
Packaging	Poly Bag	Poly Bag	Poly Bag	Poly Bag
Availability	<b>A</b>	<b>A</b>	<b>A</b>	<b>A</b>



**A** Very Common Item - Good Stock    **B** Common Item - Moderate Stock    **C** Less Common Item - Call for Availability

# UNIVERSAL PADS PREMIUM LINE (3 PLY)

To complement our line of standard single ply pads we offer a premium line of composite pads which feature 3-ply construction. The highly absorbent meltblown core (MB) is bonded on both sides with spun-bond polypropylene and/or fine fiber polypropylene. This renders the pad into a low-linting, highly durable finished product.

**Spunbond (S)** polypropylene is an exceptionally strong, ultra-light non-woven which is durable and has a high tensile strength. Lint free and with a slick texture, these pads are great for wiping applications, including removing grease from hands.

**Fine Fiber (F)** polypropylene is a soft, non-linting super absorbent fiber that will absorb quickly, remove sheen from plant floors, and also provide a tacky surface to give a gripping characteristic.

All premium pads are perforated to reduce waste. Also available in GREEN – the safety colour indicates hazards are present. Commonly used by medical professionals.

SKU	PSP100-006	PSP100-113	PSP100-035	PSP100-082
Category	Pad	Pad	Pad	Pad
Class	Universal	Universal	Universal	Universal
Stock Unit	Bale	Bale	Bale	Bale
Qty Per Unit	100	100	200	100
Colour	Grey	Grey	Grey	Green
Weight	Heavy	Medium	Single	Heavy
Construction	3-ply MB	3-ply MB	3-ply MB	3-ply MB
Features	*SMF	*SMF	*SMF	*FMF
Unit Dims	15" x 18"	15" x 18"	15" x 18"	15" x 18"
# Per Pallet	36	36	36	36
Pallet Dims, Weight	40" x 48" x 81", 410 lbs	40" x 48" x 75", 375 lbs	40" x 48" x 85", 500 lbs	40" x 48" x 81", 410 lbs
Packaging	Poly Bag	Poly Bag	Poly Bag	Poly Bag
Availability	A	A	A	B

\*SMF = SPUNBOND / MELTBLOWN / FINE FIBER

\*FMF = FINE FIBER / MELTBLOWN / FINE FIBER

**A** Very Common Item - Good Stock

**B** Common Item - Moderate Stock

**C** Less Common Item - Call for Availability

# ABSORBENTS

## HAZMAT PADS (CHEMICAL)

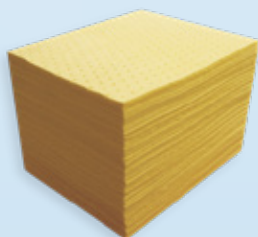
Hazmat sorbents are used to absorb most aggressive fluids and all non-aggressive fluids. Our most popular pad is a high visibility yellow premium fine-fiber composite, which is non-linting, quick to absorb, and great for gripping smooth surfaces.

Choose these pads if there is any concern about what may be absorbed. The safety yellow colour is an indicator that immediate health hazards may be present (acids, poisons etc.).

SKU	PSP100-007	PSP100-015
Category	Pad	Pad
Class	<b>Hazmat</b>	<b>Hazmat</b>
Stock Unit	Bale	Bale
Qty Per Unit	<b>100</b>	<b>100</b>
Colour	Yellow	Yellow
Weight	<b>Heavy</b>	<b>Heavy</b>
Construction	3-ply MB	1-ply MB
Features	*FMF	**CAUTION
Unit Dims	15" x 18"	15" x 18"
# Per Pallet	36	30
Pallet Dims, Weight	40" x 48" x 81", 410 lbs	40" x 48" x 81", 410 lbs
Packaging	Poly Bag	Poly Bag
Availability	<b>A</b>	<b>B</b>

\*FMF = FINE FIBER / MELTBLOWN / FINE FIBER

\*\*High visibility safety yellow pad. An STF Caution pictogram makes this pad readily identifiable in hazardous areas.



PSP100-007



PSP100-015

**A** Very Common Item - Good Stock    **B** Common Item - Moderate Stock    **C** Less Common Item - Call for Availability



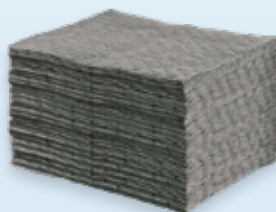
## RECYCLED PADS

Made from recycled synthetic polypropylene fibers, these pads provide good strength, durability and have high absorbency rates. Pads are laminated with a spunbond cover and the recycled core fibers are needle punched onto a base layer. Recycled content approx. 85%.

SKU	PSP100-013	PSP100-014
Category	Pad	Pad
Class	<b>Oil Only</b>	<b>Universal</b>
Stock Unit	Bale	Bale
Qty Per Unit	<b>100</b>	<b>100</b>
Colour	White	Grey
Weight	<b>Heavy</b>	<b>Heavy</b>
Construction	3-ply	3-ply
Features	Perforated Bonded	Perforated Bonded
Unit Dims	16" x 18"	16" x 18"
# Per Pallet	36	36
Pallet Dims, Weight	40" x 48" x 70", 450 lbs	40" x 48" x 70", 450 lbs
Packaging	Poly Bag	Poly Bag
Availability	<b>B</b>	<b>B</b>



PSP100-013



PSP100-014

### PACKAGING OPTIONS

All pads are typically supplied in poly bags, which allow for easy portability and storage. Some clients prefer having pads supplied in convenient and sturdy dispenser boxes. Makes shipping and storage more efficient. Contact us for details.



**A** Very Common Item - Good Stock    **B** Common Item - Moderate Stock    **C** Less Common Item - Call for Availability

# ABSORBENTS

## OIL ONLY ROLLS

	STANDARD LINE			PREMIUM LINE				
SKU	PSP100-008	PSP100-009	PSP100-044	PSP100-037	PSP100-038	PSP100-040	PSP100-090	PSP100-136
Category	Roll	Roll	Roll	Roll	Roll	Roll	Roll	Roll
Class	<b>Oil Only</b>	<b>Oil Only</b>	<b>Oil Only</b>	<b>Oil Only</b>	<b>Oil Only</b>	<b>Oil Only</b>	<b>Oil Only</b>	<b>Oil Only</b>
Stock Unit	Roll	Roll	Roll	Roll	Roll	Roll	Roll	Roll
Qty Per Unit	<b>1</b>	<b>2</b>	<b>1</b>	<b>1</b>	<b>2</b>	<b>1</b>	<b>1</b>	<b>1</b>
Colour	White	White	White	White	White	White	Blue	Blue
Weight	<b>Heavy</b>	<b>Heavy</b>	<b>Medium</b>	<b>Heavy</b>	<b>Heavy</b>	<b>Medium</b>	<b>Medium</b>	<b>Medium</b>
Construction	1-ply	1-ply	1-ply	3-ply	3-ply	3-ply	3-ply	3-ply
Features	Perforated Bond	Perforated Bond	Perforated Bond	*SMF	*SMF	*SMF	*SMF	*SMF
Unit Dims	30" x 150'	15" x 150'	30" x 150'	30" x 150'	15" x 150'	30" x 150'	30" x 150'	38" x 144'
# Per Pallet	18	18	18	18	18	18	18	18
Pallet Dims, Weight	40"x 48"x 64", 400 lbs	40"x 48"x 64", 400 lbs	40"x 48"x 64", 370 lbs	40"x 48"x 64", 400 lbs	40"x 48"x 64", 400 lbs	40"x 48"x 64", 370 lbs	40"x 48"x 64", 400 lbs	40"x 48"x 64", 370 lbs
Packaging	Poly Bag	Poly Bag	Poly Bag	Poly Bag	Poly Bag	Poly Bag	Poly Bag	Poly Bag
Availability	<b>C</b>	<b>C</b>	<b>A</b>	<b>A</b>	<b>B</b>	<b>C</b>	<b>B</b>	<b>A</b>

\*SMF = SPUNBOND / MELTBLOWN / FINE FIBER



### How do I decide between the STANDARD and the PREMIUM line?

Our standard line of rolls combine low linting with great wicking and overall performance. Rolls are dimpled to increase the strength of polypropylene. Quick absorbing and highly versatile. Our premium line of rolls are 3-ply construction - the top and bottom sheets are non-linting - spunbond is abrasion resistant for foot traffic, fine-fiber is grippy for smooth surfaces.

**A** Very Common Item - Good Stock    **B** Common Item - Moderate Stock    **C** Less Common Item - Call for Availability

# UNIVERSAL ROLLS

	STANDARD LINE		PREMIUM LINE			
SKU	PSP100-010	PSP100-143	PSP100-011	PSP100-094	PSP100-097	PSP100-080
Category	Roll	Roll	Roll	Roll	Roll	Roll
Class	Universal	Universal	Universal	Universal	Universal	Universal
Stock Unit	Roll	Roll	Roll	Roll	Roll	Roll
Qty Per Unit	1	2	1	1	1	1
Colour	Grey	Grey	Grey	Yellow	Green	Grey
Weight	Heavy	Medium	Heavy	Heavy	Heavy	Medium
Construction	1-ply	1-ply	3-ply	3-ply	3-ply	3-ply
Features	Perforated Bond	Perforated Bond	*FMF	*FMF	*FMF	*FMF
Unit Dims	30" x 150"	15" x 150"	30" x 150"	30" x 150"	30" x 150"	30" x 150"
# Per Pallet	18	18	18	18	18	18
Pallet Dims, Weight	40" x 48" x 64", 400 lbs	40" x 48" x 64", 370 lbs	40" x 48" x 64", 400 lbs	40" x 48" x 64", 400 lbs	40" x 48" x 64", 400 lbs	40" x 48" x 64", 370 lbs
Packaging	Poly Bag	Poly Bag	Poly Bag	Poly Bag	Poly Bag	Poly Bag
Availability	A	C	C	B	B	B

\*FMF = FINE FIBER / MELTBLOWN / FINE FIBER



## How do I decide between the STANDARD and the PREMIUM line?

Our standard line of rolls combine low linting with great wicking and overall performance. Rolls are dimpled to increase the strength of polypropylene. Quick absorbing and highly versatile. Our premium line of rolls are 3-ply construction - the top and bottom sheets are non-linting - spunbond is abrasion resistant for foot traffic, fine-fiber is grippy for smooth surfaces.

**A** Very Common Item - Good Stock    **B** Common Item - Moderate Stock    **C** Less Common Item - Call for Availability

# ABSORBENTS

## SORBENT SOCKS

Produced in 4 foot, 8 foot, and custom lengths, **Sorbent Socks** are encased in a spunbond outer sleeve and used to surround equipment or drums or prevent spills from spreading. If a spill occurs, socks are an excellent way to surround and contain a spill. Commonly found in most spill kits.

Supplied in cardboard boxes for easy storage and transport.

	ABSORBENT SOCKS						
SKU	PSP100-028	PSP100-029	PSP100-030	PSP100-031	PSP100-073	PSP100-083	PSP100-084
Category	Sock	Sock	Sock	Sock	Sock	Sock	Sock
Class	Oil Only	Oil Only	Universal	Universal	Universal (Corn Cob)	Hazmat	Hazmat
Stock Unit	Box	Box	Box	Box	Box	Box	Box
Qty Per Unit	30	15	30	15	40	30	15
Colour	White	White	Grey	Grey	Natural	Yellow	Yellow
Weight	Standard	Standard	Standard	Standard	Standard	Standard	Standard
Construction	Spunbond Sleeve	Spunbond Sleeve	Spunbond Sleeve	Spunbond Sleeve	Spunbond Sleeve	Spunbond Sleeve	Spunbond Sleeve
Features	N/A	N/A	N/A	N/A	N/A	N/A	N/A
Unit Dims	3" x 48"	3" x 96"	3" x 48"	3" x 96"	3" x 48"	3" x 48"	3" x 96"
# Per Pallet	20	20	20	20	20	20	20
Pallet Dims, Weight	48"x 40"x 90", 550 lbs	48"x 40"x 90", 550 lbs	48"x 40"x 90", 550 lbs	48"x 40"x 90", 550 lbs	48"x 40"x 90", 550 lbs	48"x 40"x 90", 550 lbs	48"x 40"x 90", 550 lbs
Packaging	Boxed	Boxed	Boxed	Boxed	Boxed	Boxed	Boxed
Availability	A	A	A	A	C	A	B



**A** Very Common Item - Good Stock

**B** Common Item - Moderate Stock

**C** Less Common Item - Call for Availability



# ABSORBENTS

## SORBENT BOOMS AND BILGE BOOMS

**Sorbent Booms** are ideally suited for the control, and clean up, of oil spills on water. They can also be used to contain and absorb large industrial hydrocarbon spills on land. Booms are constructed with a strong mesh outer sleeve encasing a poly sock skin filled with highly sorbent polypropylene. The filler will not shed, and the booms won't sink, even when saturated with oil. A nylon rope runs through each boom – booms can be clipped together to form longer lengths.

**Bilge Booms** are designed specifically for use in bilges and sumps. Being strong and lint-free, they can also be very effective in absorbing oil-based spills and leaks in small confined spaces.

	SORBENT BOOMS			BILGE BOOMS	
SKU	PSP100-016	PSP100-017	PSP100-036	PSP100-018	PSP100-076
Category	Boom	Boom	Boom	Boom	Boom
Class	Oil Only	Oil Only	Universal	Oil Only	Oil Only
Stock Unit	Bale	Bale	Bale	Bale	Bale
Qty Per Unit	4	4	4	10	20
Colour	White	White	Grey	White	White
Weight	Standard	Standard	Standard	Standard	Standard
Construction	Net Sock with Metal Clips, Nylon Rope	Net Sock with Metal Clips, Nylon Rope	Net Sock with Metal Clips, Nylon Rope	Net Sock with Metal Clips, Nylon Rope	Net Sock with Metal Clips, Nylon Rope
Unit Dims	5" x 10'	8" x 10'	5" x 10'	8" x 18"	5" x 18"
# Per Pallet	20	16	20	10	20
Pallet Dims, Weight	40"x 48"x 75", 345 lbs	40"x 48"x 75", 345 lbs	40"x 48"x 75", 345 lbs	40 x 48" x 72", 405 lbs	40 x 48" x 72", 405 lbs
Packaging	Poly Bag	Poly Bag	Poly Bag	Poly Bag	Poly Bag
Availability	A	A	C	A	C



**A** Very Common Item - Good Stock

**B** Common Item - Moderate Stock

**C** Less Common Item - Call for Availability

# ABSORBENTS

## SORBENT PILLOWS

Pillows are easy to place in hard to reach areas. Use under machines and leaky hydraulic hoses to catch drips, or wedge in corners cramped for space. Sorbent pillows pull liquids from the floor like a sock.

Catches leaks like a pan and absorbs large amounts of liquids due to large surface area and fast wicking filler. Supplied in cardboard boxes.

	SORBENT PILLOWS					
SKU	PSP100-051	PSP100-052	PSP100-066	PSP100-067	PSP100-085	PSP100-086
Category	Pillow	Pillow	Pillow	Pillow	Pillow	Pillow
Class	<b>Oil Only</b>	<b>Oil Only</b>	<b>Universal</b>	<b>Universal</b>	<b>Hazmat</b>	<b>Hazmat</b>
Stock Unit	Box	Box	Box	Box	Box	Box
Qty Per Unit	<b>10</b>	<b>20</b>	<b>10</b>	<b>20</b>	<b>10</b>	<b>20</b>
Colour	White	White	Grey	Grey	Yellow	Yellow
Weight	Single	Single	Single	Single	Single	Single
Construction	Polypropylene	Polypropylene	Polypropylene	Polypropylene	Polypropylene	Polypropylene
Unit Dims	<b>18" x 18"</b>	<b>8" x 18"</b>	<b>18" x 18"</b>	<b>8" x 18"</b>	<b>18" x 18"</b>	<b>8" x 18"</b>
# Per Pallet	24	20	24	20	24	20
Pallet Dims, Weight	48" x 40" x 96", 420 lbs	48" x 40" x 96", 345 lbs	48" x 40" x 96", 420 lbs	48" x 40" x 96", 345 lbs	48" x 40" x 96", 420 lbs	48" x 40" x 96", 345 lbs
Packaging	Boxed	Boxed	Boxed	Boxed	Boxed	Boxed
Availability	<b>B</b>	<b>A</b>	<b>A</b>	<b>A</b>	<b>B</b>	<b>A</b>



**A** Very Common Item - Good Stock    **B** Common Item - Moderate Stock    **C** Less Common Item - Call for Availability

# ABSORBENTS

## SORBENT SWEEPS

**Sweeps** attach to a sorbent boom to catch oily sheens that linger behind. Sturdy construction features nylon strap securely attached to a durable sorbent mat. Excellent for on water spills and removes sheen from petroleum-based spills on water.

SKU	Item Type	Packaging	Weight / Bale	# Bales / Pallet	Pallet Shipping Dims, Weight	Availability
PSP100-019	Sweep, 19" x 100', White	1/bale	440 lbs	36	40" x 48" x 60", 441 lbs	<b>B</b>



## OIL SNARES / POM POMS

Oil Snares (Pom Poms) consist of thin strands of polypropylene joined together to form a high surface area sorbent. Heavy oils adhere, water is repelled. Supplied either as loose moppets, or, connected together on a 50 foot rope.

SKU	Item Type	Quantity/Bag	Weight / Bag	# Bags / Pallet	Pallet Shipping Dims, Weight	Availability
PSP100-023	Snare On A Rope (30 snares per 50 foot rope)	1	<b>16 lbs</b>	25	40" x 48" x 54", 430 lbs	<b>B</b>
PSP100-024	Snare, Loose Singles (30 snares per bag)	30	<b>15 lbs</b>	25	40" x 48" x 54", 405 lbs	<b>B</b>



**A** Very Common Item - Good Stock

**B** Common Item - Moderate Stock

**C** Less Common Item - Call for Availability

# ABSORBENTS

## RUGS AND SPECIALTY MATTING

### NEEDLE PUNCHED RUGS

Constructed of 100% polypropylene, this rug is made of needle punched polypropylene fibers that will absorb petroleum-based liquids, water and aggressive liquids. Designed to withstand constant foot and forklift traffic, these rugs can be used along aisle ways and work areas where falls / slipping may occur.

SKU	Type	Class	Colour	Qty	Unit Dims, Weight	Material	Qty / Pallet	Pallet Shipping Dims, Weight	Availability
PSP100-117	Needle Punched	Universal	Grey	1/bale	36" x 150', 50 lbs	Polypropylene	12/pallet	42" x 48" x 78", 650 lbs	<b>C</b>

### RECYCLED RAG RUGS

Rag rugs are universal sorbent rugs used in maintenance and industrial environments. The rag rug is a non-woven mat made of recycled cotton and polyester with a laminated backing on one side. It provides sturdy footing, conceals grime and absorbs oil, water and solvent-based liquids.

SKU	Type	Class	Colour	Qty	Unit Dims, Weight	Material	Qty / Pallet	Pallet Shipping Dims, Weight	Availability
PSP100-107	Rag Rug	Universal	Blue/Grey	1/bale	36" x 150', 50 lbs	Recycled Fibers	12/pallet	42" x 48" x 78", 650 lbs	<b>B</b>
PSP100-116	Rag Rug	Universal	Blue/Grey	2/bale	36" x 150', 50 lbs	Recycled Fibers	12/pallet	42" x 48" x 78", 650 lbs	<b>B</b>



**A** Very Common Item - Good Stock    **B** Common Item - Moderate Stock    **C** Less Common Item - Call for Availability



## TRACK MATS

These mats are 3-Ply construction consisting of one (1) layer of needle-punch polypropylene, one (1) layer of oil only meltblown polypropylene, and a poly backing to prevent seepage. Use the 19" wide rolls for the outside of the tracks, and use the 57" wide roll for in between the tracks. Recommended application - absorb oils, fuels, and other hydrocarbons in rail yards.

SKU	Type	Class	Colour	Qty	Unit Dims, Weight	Material	Qty / Pallet	Pallet Shipping Dims, Weight	Availability
PSP100-108	Track Mat	Oil Only	Black	1/bale	57" x 100', 42 lbs	Needle Punched PP / MB / Poly Back	9/pallet	42" x 48" x 78", 428 lbs	<b>B</b>
PSP100-109	Track Mat	Oil Only	Black	2/bale	19" x 100", 28 lbs	Needle Punched PP / MB / Poly Back	18/pallet	42" x 48" x 82", 556 lbs	<b>B</b>



## OIL INDUSTRY PRODUCTS

These specialized products are very popular in the oilfield services industry.

SKU	Type	Class	Colour	Qty	Unit Dims, Weight	Material	Qty / Pallet	Pallet Shipping Dims, Weight	Availability
PSP100-127	10oz DuraRug	Universal	Blue/Grey	1/bale	36" x 150'	Needle Punched	24	48" x 40" x 79", 795 lbs	<b>B</b>
PSP100-129	8oz Drilling Mat	Universal	Black	1/bale	36" x 150'	Needle Punched Poly Back	18	48" x 40" x 73", 565 lbs	<b>B</b>



PSP100-127



PSP100-129

**A** Very Common Item - Good Stock    **B** Common Item - Moderate Stock    **C** Less Common Item - Call for Availability

# ABSORBENTS

NEW

## ADHESI-MAT ADHESIVE BACKED MATTING

Adhesi-Mats are highly absorbent needle punched polypropylene matting with an impermeable adhesive backing.

- **High Durability** – withstands foot and forklift traffic
- **Adhesive Back** – sticks to most surfaces, won't delaminate
- **Anti-Fatigue** – great for workstations
- **Dark Colour** – disguises spilled fluids
- **Impermeable** – keeps fluids off your floor
- **Stays in Place** – won't shift, ripple or buckle – limits accidents
- **Re-Useable** – wet-vac, sweep, or vacuum, and then re-use



SKU	Item	Description	Class	Colour	Qty	Unit Dims, Weight	Qty / Pallet	Pallet Shipping Dims, Weight	Availability
PSP100-192	18" AdhesiMat Roll	latex / adhesive-coated 8 oz non-woven geofabric	Universal	Grey	1/roll	18" x 100', 15 lbs	36/pallet	42" x 48" x 60", 590 lbs	A
PSP100-193	36" AdhesiMat Roll	latex / adhesive-coated 8 oz non-woven geofabric	Universal	Grey	1/roll	36" x 100', 30 lbs	24/pallet	42" x 48" x 78", 770 lbs	A
PSP100-194	3' x 4' AdhesiMat Entry Mat	latex / adhesive-coated 8 oz non-woven geofabric	Universal	Grey	12/bag	36" x 48", 1.2 lbs	60/pallet	42" x 48" x 70", 914 lbs	A

**EASY TO CUT AND APPLY - PUT IT TO WORK TODAY!**

### APPLICATIONS

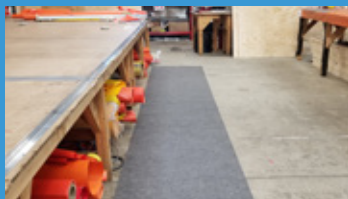
- **Production:** Overspray, machine leaks, metal shavings, condensation from pipes, clutter.
- **Fluid Transfer:** Leaks and drips from pumps, faucets and hoses.
- **Fleet Maintenance:** Open oil pans and containers, oily or wet floors, trip hazards.
- **Warehouses and Loading Docks:** Rain or snow seeping under doors, loose packing materials, leaking containers, slippery floors.
- **Entrances:** Entrance mats that don't lay flat or capture water, poor lighting, low friction floor surfaces.
- **Restrooms and Locker Rooms:** Wet and slippery floors, overflowing waste cans, leaky soap dispensers.

# ABSORBENTS

NEW

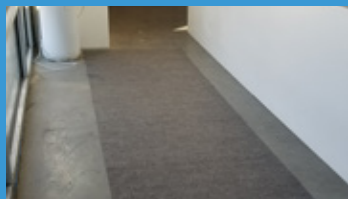
## ADHESIMAT ADHESIVE BACKED MATTING

### INDUSTRIAL



#### Warehouse/Plant Matting

Absorbs liquids so they don't get tracked through your facility



#### Aisle Runner

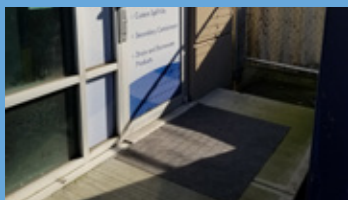
Keeps workplace clean to avoid employee slips, trips and falls



#### Durable / Stays in Place

Handles forklift, pallet jack and foot traffic

### RETAIL / HOMEOWNER



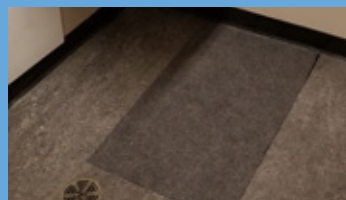
#### Disposable Entrance Mat

Replaces costly rental mats  
Wet-vac, sweep, vacuum



#### Construction / Open House

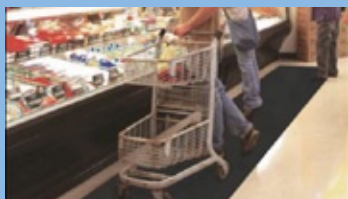
Protect flooring from debris, dirt or accidental spills



#### Restrooms

Absorbent, prevents slips and falls around sinks and fountains

### FOOD SERVICE



#### Display Coolers / Fridges

Dries fast, collects drips  
Dark colour disguises fluids



#### No Slipping or Buckling

Stays put even when wet  
Low profile






#### Entry Ways

Wipe your feet, great for wet weather

# ABSORBENTS

## RAGS AND WIPING PRODUCTS

Pacific Spill Supply offers an assortment of our most popular rags and wiping products. Not all materials are created equal. We only source our rags from premium quality used clothing that's been sorted and cut for your specific purpose.

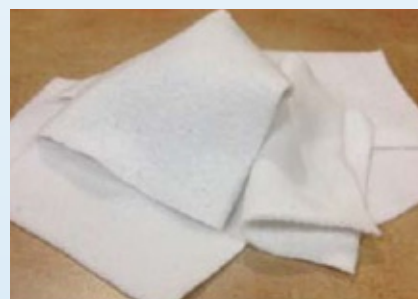
SKU	Description	Packaging	Absorbs	Application	Availability
PSP100-111	Coloured Fleece Rags	20 lb clear bag, compressed	Universal	Oil, grease and water absorbent, very economical in price.	
PSP100-132	White Fleece Rags	20 lb clear bag, compressed	Universal	Absorbent, strong, white (colorfast) wiper: oil, grease and solvent applications.	
PSP100-131	Coloured Terry Rags	20 lb clear bag, compressed	Universal	Most absorbent highest capacity wiper: Grease, oil, water, solvents, any liquid.	



PSP100-131



PSP100-111



PSP100-132

### WHAT'S THE DIFFERENCE?

**Fleece Rags** - An all-purpose, low cost wiper. Less expensive than rental or paper wipers. Economic for uses with grease, oil, dirt, cement, grime etc. Contains recycled material. Often preferred for heavy duty and general shop and maintenance applications. Ideal for auto shops, chemical plants, heavy equipment, industrial plants, janitorial, machine shops and oil fields. Fleece rags tend to have a smooth jersey texture on one side with a fluffier "downy" style texture on the reverse, material is soft.

**Terry Rags** - An all-purpose, most absorbent high capacity wiper. Highly absorbent cotton towel material. A janitorial favourite. Perfect for wiping as it absorbs everything and leaves a perfect, dry surface with no residue. Very strong, long lasting and takes a lot of abuse.

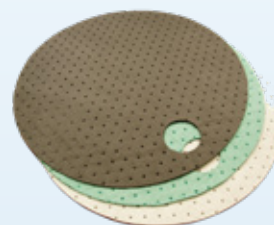
# ABSORBENTS

## ACCESSORIES

SKU	Description	Packaging	Absorbs	Availability
PSP100-106	Drum Tops, 22" diameter, Oil Only	25/bale (White)	Oil Only	A
PSP100-022	Drum Tops, 22" diameter, Universal	25/bale (Grey)	Universal	A
PSP600-061	Drip Pans, 10.5" x 10.5" x 3", Oil Only	16/case	Oil Only	B
PSP600-065	Drip Pans, 10.5" x 10.5" x 3", Universal	16/case	Universal	B
PSP900-044	Sorbent Roll Rack, for up to 32" wide rolls	1/ea	Universal	C

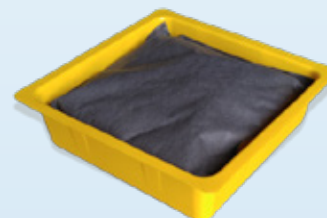
### DRUM TOPS

Keep your drum containment area neat and clean with pre-cut 55 gallon drum tops. Available in both oil only (white) and universal (grey).



### DRIP PANS

Ideal for around drums and problem areas. Polyethylene pan comes with a removable sorbent pillow which allows you to keep the pan and just change out the pillow when saturated. The low profile pan is easy to fit in tight spaces where leaking spigots are a problem. Wide base helps prevent tipping. When full, tray will hold up to three-quarters of a gallon of fluid.



### SORBENT ROLL RACK

Store rolls off the floor for ready access and quick use. Keep rolls dry and clean. A convenient way to dispense absorbents so you only use the amount you need. This roll rack stand has a locking metal frame for safety and the painted frame will resist rust and corrosion. It has a tilted design for stability and can be folded for compact storage. Adjustable width feature allows usage for rolls up to 15 inches wide or larger rolls up to 30 inches wide. Assembly required.



# GRANULARS

## INORGANIC

CleanSweep is an all purpose industrial absorbent that is an extremely effective tool for controlling liquid spills and odours. Safely and quickly absorbs alcohols, coolants, oils and fuels, paints and solvents. Not WHMIS controlled. Absorbs up to 125% of its own weight in liquid. Contains less than 1% crystalline silica. Available in a range of convenient sizes.

SKU	Type	Packaging	Qty	Qty / Pallet	Pallet Dims, Weight	Availability
INORGANIC						
PSP100-060	CleanSweep Granular, Diatomaceous Earth Crystals	2 kg (4.4 lb) bag	1/bag	375	40" x 48" x 65", 1650 lbs	A
PSP100-074	CleanSweep Granular, Diatomaceous Earth Crystals	2.7 kg (6 lb) shaker jug	1/jug	270	40" x 48" x 60", 1620 lbs	A
PSP100-139	CleanSweep Granular, Diatomaceous Earth Crystals	12 kg (26 lb) bag	1/bag	84	40" x 48" x 65", 2185 lbs	A



PSP100-139



PSP100-060



PSP100-074

**A** Very Common Item - Good Stock    **B** Common Item - Moderate Stock    **C** Less Common Item - Call for Availability



# GRANULARS

## ORGANIC

**Sphag Sorb** is a 100% natural, organic, and non-toxic peat moss product. The quick wicking action and non-leaching characteristics of Sphag Sorb limits the affected surface, reducing contamination. Dry peat moss will not absorb water.

**Oil Gator** is produced from recycled, chemically modified cellulosic fibers. It contains all the necessary ingredients (nitrogen, sulphur and phosphorous) to enhance biodegradation of hydrocarbons by indigenous bacteria. Oil Gator meets all OSHA requirements and is biodegradable. It is not WHMIS regulated. When activated by the addition of moisture, the indigenous bacteria are furnished with ideal growth conditions, within which they proliferate and rapidly utilize the available hydrocarbon as a food source.

SKU	Type	Packaging	Qty	Qty / Pallet	Pallet Dims, Weight	Availability
ORGANIC						
PSP100-122	Sphag Sorb, 8 quart, 2 lb Bag, Loose Fill	0.9 kg (2 lb) bag	1/bag	288	40"x48"x96", 700 lbs	A
PSP100-119	Sphag Sorb, 2.2 Cubic Foot Bag, Loose Fill, 25 lb bag	11.4 kg (25 lb) bag	1/bag	30	40"x48"x48", 550 lbs	A
PSP100-162	Sorbent, Bioremediation Agent, Oil Gator (30 lb bag)	13.6 kg (30 lb) bag	1/bag	60	40"x 48" x 66", 1850 lbs	A



PSP100-122



PSP100-119



PSP100-162

**A** Very Common Item - Good Stock    **B** Common Item - Moderate Stock    **C** Less Common Item - Call for Availability



# NEUTRALIZERS

## ACID NEUTRALIZERS

The use of VYTAC™ spill neutralizing products is very important in the proper treatment and subsequent handling of hazardous material spills and process wastes.

- Quickly and efficiently neutralize concentrated acid spills
- Environmentally friendly - reaction generates harmless gases
- Built in indicator system - powder changes colour when neutralization is complete (turns pink)
- Residues are safe to handle and environmentally benign

SKU	Type	Packaging	Availability
PSP100-155	Acid Neutralizer, 1 L bottle (powder)	12/case	A
PSP100-185	Acid Neutralizer, 4 kg jug (powder)	4/case	A
PSP100-186	Acid Neutralizer, 22.7 kg (50 lb) pail (powder)	1/pail	C
PSP100-187	Acid Neutralizer, 1 L bottle (liquid)	12/case	A
PSP100-154	Acid Neutralizer, 4.5 L jug (liquid)	4/case	A
PSP100-188	Acid Neutralizer, 22.7 L pail (liquid)	1/pail	C



A Very Common Item - Good Stock
 B Common Item - Moderate Stock
 C Less Common Item - Call for Availability

# SPILL KITS

## INTRODUCTION

Pacific Spill Supply offers a complete range of spill kits to enable you to respond quickly and to contain and clean up spills for almost any fluid. Our kits will help you:

- Contain And Clean Up Spills Quickly
- Comply With Environmental Regulations
- Reduce Clean Up and Disposal Costs

**Spill Kits are commonly supplied in the following configurations:**

- **Oil Only (White)** is suitable for oils, fuels, solvent, petroleum based spills on land or water
- **Universal (Grey)** is suitable for water, oils, fuels, solvents
- **Hazmat (Yellow)** is for acids, bases and unknown liquids



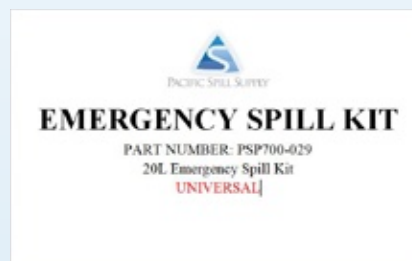
# SPILL KITS

## PACIFIC SPILL CUSTOMIZATION

**NEED A CUSTOMIZED KIT  
OR A CROSSOVER?**

We can help - contact us today

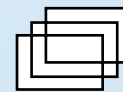
- Fully Branded, Private Label Kits
- ID Card with SKU and Product Description
- Welded Waterproof Clear Vinyl Cover on all Bagged Kits
- Kit Contents are Sealed in Clear, Tamper Proof Bag
- All Kits Come with Contents List and Spill Kit Instructions Sheet
- Easy Re-Ordering of Entire Kit or Contents Only



No Minimum  
Order Quantity



All Spill Kits Made  
In Canada



100% Customizable



# SPILL KITS

## CLEAR POLY BAG SPILL KITS

**NEED A CUSTOMIZED KIT  
OR A CROSSOVER?**

We can help - contact us today

### ECONOMY POLY BAG SPILL KITS

Economical, customizable and just the right size. These spill kits are ideal for commercial vehicles, service trucks and machinery. All contents are poly bagged.

SKU	Type of Kit	Style	Capacity	Size / Weight	Contents *	Availability
PSP700-005	Poly Bag	Oil Only ○	20 L	17" x 19", 7 lbs	10 x Absorbent Pads 2 x Socks (3" x 4') 1 x Granular (2.2 kg) 2 x Disposal Bags 1 x Nitrile Gloves	M
PSP700-006	Poly Bag	Universal ●	20 L	17" x 19", 7 lbs		M
PSP700-022	Poly Bag	Hazmat ●	20 L	17" x 19", 7 lbs		M
PSP700-158	Poly Bag	Oil Only / Universal ○●	20 L	17" x 19", 7 lbs		M

\*All kits come with custom contents list and spill kit instructions sheet



**M** M = Made to Order - Spill Kit Components in Stock



# SPILL KITS

## YELLOW BAG SPILL KITS

**NEED A CUSTOMIZED KIT  
OR A CROSSOVER?**

We can help - contact us today

Our most popular style of kit, all spill kit items are sealed into poly bags along with with a contents sheet and spill kit instructions. This poly bag is then inserted into a custom sized zippered yellow bag (flat or fitted styles available). Identifying information (SKU, Description, Capacity etc.) along with distributor, or end user contact information, is then printed on an index card. A clear PVC cover is permanently welded over this index card.

SKU	Type of Kit	Style	Capacity	Size / Weight	Contents *	Availability
PSP700-028	Flat Yellow Bag	Oil Only 	18 L	18" x 26", 8 lbs	10 x Absorbent Pads 2 x Socks (3" x 4')	
PSP700-029	Flat Yellow Bag	Universal 	18 L	18" x 26", 8 lbs	1 x Granular (2.2 kg) 1 x Nitrile Gloves	
PSP700-030	Flat Yellow Bag	Hazmat 	18 L	18" x 26", 8 lbs	2 x Disposal Bags	
PSP700-008	Fitted Yellow Bag	Oil Only 	30 L	15" x 18", 10 lbs	25 x Absorbent Pads 2 x Socks (3" x 4')	
PSP700-023	Fitted Yellow Bag	Universal 	30 L	15" x 18", 10 lbs	1 x Granular (2.2 kg) 1 x Disposal Bag	
PSP700-024	Fitted Yellow Bag	Hazmat 	30 L	15" x 18", 10 lbs	1 x Nitrile Gloves 1 x Epoxy Stick	
PSP700-025	Flat Yellow Bag	Oil Only 	35 L	24" x 26", 15 lbs	30 x Absorbent Pads 2 x Socks (3" x 4')	
PSP700-026	Flat Yellow Bag	Universal 	35 L	24" x 26", 15 lbs	1 x Granular (2.2 kg) 1 x Disposal Bag	
PSP700-027	Flat Yellow Bag	Hazmat 	35 L	24" x 26", 15 lbs	1 x Nitrile Gloves 1 x Epoxy Stick	

\*All kits come with custom contents list and spill kit instructions sheet



 M = Made to Order - Spill Kit Components in Stock



# SPILL KITS

## PAIL / BUCKET SPILL KITS

**NEED A CUSTOMIZED KIT  
OR A CROSSOVER?**

We can help - contact us today

SKU	Type of Kit	Style	Capacity	Size / Weight	Contents *	Availability
PSP700-085	Poly Pail	Oil Only ○	26 L	12" dia x 15", 8 lbs	25 x Absorbent Pads 1 x Socks (3" x 4') 1 x Granular (2.2 kg) 1 x Disposal Bag 1 x Nitrile Gloves 1 x Splash Goggles	M
PSP700-086	Poly Pail	Universal ●	26 L	12" dia x 15", 8 lbs		M
PSP700-087	Poly Pail	Hazmat ●	26 L	12" dia x 15", 8 lbs		M
PSP700-069	Steel Pail	Oil Only ○	15 L	12" dia x 16", 13 lbs	10 x Absorbent Pads 1 x Socks (3" x 4') 1 x Granular (2.2 kg) 4 x Disposal Bags 1 x Nitrile Gloves 1 x Splash Goggles	M

Supplied in standard 5 gallon or 20 L pails. Common pails have push top lids, and steel pails have clamping ring. Useful with any type of equipment (forklift, truck headache rack, or mounted on a bracket).

\*All kits come with custom contents list and spill kit instructions sheet



**M** M = Made to Order - Spill Kit Components in Stock



# SPILL KITS

## POLY / OVERPACK DRUM SPILL KITS

**NEED A CUSTOMIZED KIT  
OR A CROSSOVER?**

We can help - contact us today

Poly drum with their lever lock ring lids make economical vessels for spill kits. Overpack drum spill kits make a tight, secure seal ensuring a secure and leak free transport to a disposal site. DOT approved container.

SKU	Type of Kit	Style	Capacity	Size / Weight	Contents *	Availability
PSP700-222	45 USG Blue Poly Drum	Oil Only ○	80 L	22" dia x 36", 35 lbs	50 x Absorbent Pads 1 x Nitrile Gloves 5 x Socks (3" x 4') 1 x Splash 3 x Socks (3" x 8') Goggles 1 x Drain Cover 3 x Disposal Bags 1 x Coveralls	M
PSP700-223	45 USG Blue Poly Drum	Universal ●	80 L	22" dia x 36", 35 lbs		M
PSP700-236	45 USG Blue Poly Drum	Hazmat ●	80 L	22" dia x 36", 35 lbs		M
PSP700-064	20 USG Yellow Overpack	Oil Only ○	50 L	20" dia x 24", 19 lbs	25 x Absorbent Pads 1 x Splash 4 x Socks (3" x 4') Goggles	M
PSP700-065	20 USG Yellow Overpack	Universal ●	50 L	20" dia x 24", 19 lbs	2 x Pillows (18" x 18') 2 x Disposal Bags 1 x Nitrile Gloves 1 x Plug Pattie	M
PSP700-066	30 USG Yellow Overpack	Oil Only ○	90 L	22" dia x 30", 23 lbs	50 x Absorbent Pads 1 x Splash 4 x Socks (3" x 8') Goggles	M
PSP700-067	30 USG Yellow Overpack	Universal ●	90 L	22" dia x 30", 23 lbs	4 x Pillows (18" x 18') 3 x Disposal Bags 1 x Nitrile Gloves 1 x Plug Pattie	M
PSP700-211	65 USG Yellow Overpack	Oil Only ○	130 L	28" dia x 36", 52 lbs	50 x Absorbent Pads 1 x Splash 12 x Socks (3" x 8') Goggles	M
PSP700-212	65 USG Yellow Overpack	Universal ●	130 L	28" dia x 36", 52 lbs	8 x Pillows (18" x 18') 3 x Disposal Bags 1 x Nitrile Gloves	M
PSP700-263	95 USG Yellow Overpack	Oil Only ○	250 L	32" dia x 40", 77 lbs	150 x Absorbent Pads 1 x Nitrile Gloves 10 x Socks (3" x 4') 1 x Splash	M
PSP700-264	95 USG Yellow Overpack	Universal ●	250 L	32" dia x 40", 77 lbs	8 x Socks (3" x 8') Goggles 8 x Pillows (18" x 18') 10 x Disposal Bags	M



**M** M = Made to Order - Spill Kit Components in Stock





# SPILL KITS

## MOBILE BIN SPILL KITS

**NEED A CUSTOMIZED KIT  
OR A CROSSOVER?**

We can help - contact us today

Wheeled bin kits have large capacity and flip down lids.

UV stabilized and weatherproof polyethylene container.

SKU	Type of Kit	Style	Capacity	Size / Weight	Contents *	Availability
PSP700-010	Small Yellow Mobile Bin	Oil Only ○	64 L	22" x 19" x 36", 50 lbs	40 x Absorbent Pads 2 x Socks (3" x 4') 1 x Granular (2.2 kg) 2 x Nitrile Gloves 1 x Splash Goggles 2 x Disposal Bags 1 x Epoxy Stick	M
PSP700-011	Small Yellow Mobile Bin	Universal ●	64 L	22" x 19" x 36", 50 lbs		M
PSP700-014	Medium Yellow Mobile Bin	Oil Only ○	150 L	29" x 23" x 42", 80 lbs	100 x Absorbent Pads 4 x Socks (3" x 4') 4 x Socks (3" x 8') 1 x Granular (12 kg) 2 x Nitrile Gloves 1 x Splash Goggles 2 x Disposal Bags 1 x Epoxy Stick	M
PSP700-015	Medium Yellow Mobile Bin	Universal ●	150 L	29" x 23" x 42", 80 lbs		M
PSP700-012	Large Yellow Mobile Bin	Oil Only ○	200 L	35" x 23" x 42", 110 lbs	150 x Absorbent Pads 8 x Socks (3" x 4') 8 x Socks (3" x 8') 1 x Granular (12 kg) 2 x Nitrile Gloves 1 x Splash Goggles 5 x Disposal Bags 2 x Epoxy Sticks	M
PSP700-013	Large Yellow Mobile Bin	Universal ●	200 L	35" x 23" x 42", 110 lbs		M



**M** M = Made to Order - Spill Kit Components in Stock



# SPILL KITS

## REFILL AND ACCESSORY ITEMS

All of our spill kits are built in-house and every spill kit that leaves our facility comes with a detailed contents sheet. Refill kits (a complete set of all spill kit contents) are available for purchase.

All items (including spill kit bags) can also be purchased individually. Common refill items are listed below:



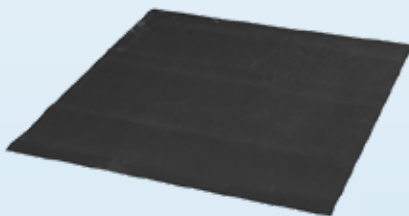
**PSP900-009**



**PSP100-060**



**PSP900-006** (Black)  
**PSP900-001** (Clear)



**PSP600-018** (48" square)  
**PSP600-019** (36" square)



**PSP900-005**



**PSP500-025**



**PSP900-025**



**PSP100-122**



**PSP500-003**

# DRAIN & STORMWATER MANAGEMENT

## ULTRA-DRAIN SEALS

### Stop spills from going down the drain.

The Ultra-Drain Seal is a valuable addition to any emergency response plan, spill kit, SPCC or stormwater management program.

- The storm drain cover is constructed with a flexible, non-absorbing material and reinforced tear resistant mesh.
- Reinforcing mesh is sandwiched between layers of polyurethane – increases durability and resistance to tearing.
- Resists oil, water, and most aggressive chemicals, cleans with soap and water.



SKU	Shape	MPN	Material	Colour	Dimensions, Weight	Availability
PSP600-023	Square	ULT 2127	Polyurethane	Orange	24" x 24" x 3/8", 8 lbs	<b>C</b>
PSP600-013	Square	ULT 2130	Polyurethane	Orange	36" x 36" x 3/8", 20 lbs	<b>C</b>
PSP600-032	Square	ULT 2131	Polyurethane	Orange	42" x 42" x 3/8", 23 lbs	<b>C</b>
PSP600-010	Square	ULT 2132	Polyurethane	Orange	48" x 48" x 3/8", 36 lbs	<b>C</b>
Economical Option – Drain Covers (non-sealing), available in PVC and Neoprene						
PSP600-019	Square	N/A	Neoprene	Black	36" x 36" x 1/16", 4 lbs	<b>A</b>
PSP600-018	Square	N/A	Neoprene	Black	48" x 48" x 1/16", 7 lbs	<b>B</b>
PSP600-028	Square	N/A	22 oz PVC	Orange	24" x 24", 2 lbs	<b>A</b>
PSP600-022	Square	N/A	22 oz PVC	Orange	36" x 36", 3 lbs	<b>A</b>
PSP600-021	Square	N/A	22 oz PVC	Orange	48" x 48", 4 lbs	<b>A</b>

**A** Very Common Item - Good Stock

**B** Common Item - Moderate Stock

**C** Less Common Item - Call for Availability

# DRAIN & STORMWATER MANAGEMENT

## ULTRA-SPILL BERMS

Temporary spill berm seals off spills from the environment, nearby drains and doorways.

- Standard 10 foot sections can be cut to various lengths to meet custom needs.
- Unique, urethane material “weeps” into small cracks and crevices to seal off liquid flow.
- Spill Berm is non-absorbing and easily cleaned for repeated use.
- Also available in black to help hide dirt and grime.
- Applications include: Spill response, Temporary secondary containment, Sealing off doorways during washdown operations

SKU	Length	MPN	Colour	Dimensions, Weight	Availability
PSP600-005	10 foot section	ULT 2100	Orange	10' x 4" x 2 1/4" , 31 lbs	<b>B</b>



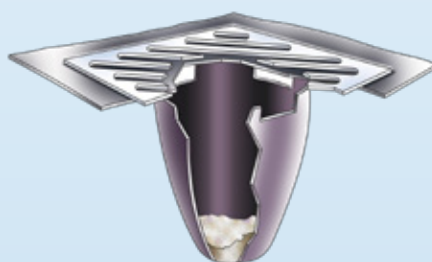
# DRAIN & STORMWATER MANAGEMENT

## ULTRA-DRAIN GUARDS

Keep sediment and other pollutants from entering the water system with these catch basin inserts.

- This simple, yet specifically designed and engineered geotextile fabric catch basin insert can be installed in most drains. The heavy duty material removes contaminants like litter, sand, and oil from stormwater flow.
- Installation is quick and easy – simply raise the grate, place the drain guard over the opening and carefully lower the grate back into place, pinching the fabric in place to make the unit secure.
- Curb Insert Models also available for use with combination catch basins with a street grate and curb opening. Heavy-duty tension rod secures drain guard inside curb inlet – stopping sediment and other contaminants from entering curb portion of storm drain. Fits grate sizes up to 40" x 40" and curb inlets up to 60" wide.

SKU	Description	MPN	Dimensions, Weight	Performance	Availability
PSP600-001	Drain Guard, Oil and Sediment	ULT 9217	48" x 36" x 18", 1 lb	Up to 0.87 USG (3.5 L of oil) and up to 40 lbs (18 kg) sediment	<b>A</b>
PSP600-002	Drain Guard, Curb Insert Model	ULT 9230	24" to 42" inlet, 2 lbs	Up to .87 gallons (3.5 L) of oil and up to 40 lbs. (18 kg) of sediment	<b>B</b>



**A** Very Common Item - Good Stock

**B** Common Item - Moderate Stock

**C** Less Common Item - Call for Availability

# DRAIN & STORMWATER MANAGEMENT

## ULTRA-GUTTER GUARD

Keep sediment and other debris out of curb inlets.

- Made of 100% recycled materials, can be reused.
- Built in overflow ports allow water to pass through during major rainfall events.
- Quick installation – place in front of curb inlet.



SKU	Description	MPN	Weight	Availability
PSP600-003	Gutter Guard, 9" diameter x 8 feet long	ULT 9320	15 lbs	C
PSP600-008	Gutter Guard, 9" diameter x 10 feet long	ULT 9321	19 lbs	C

## CATCH BASIN DRAIN DONUT

- Designed to have the rainwater pond and filter into the catch basin near construction sites.
- Easy installation and easier maintenance for your erosion control needs.
- Filter fabric wraps around the grate and is fastened with the belting and buckles attached. The protected grate is then reinserted into the frame support.



SKU	Description	Dims	Weight	Availability
PSP600-082	Catch Basin Drain Donut, High Flow (Yellow)	28" x 36" x 4"	2 lbs	A



# SPILL CONTAINMENT

## ULTRA-UTILITY TRAYS®

Keep messy drips and spills off warehouse and factory floors UltraTech's Ultra-Utility Trays are engineered with heavy-duty polyethylene and designed to contain liquid spilled or leaked from containers. A ribbed platform on the bottom of the tray helps keep cans, pails and other containers out of smaller spills.

### Practical Applications Include:

- Storing oil cans or other liquid-holding containers.
- Spill containment for leaky machine parts or equipment.
- Placement under trucks or other large vehicles to leaks / spills from engines, hydraulics, or other lubricated parts.



SKU	Dimensions, in. (mm)	MPN	Containment Capacity, USG (L)	Weight, lbs (kg)	Availability
PSP600-040	12" x 48" x 4.75" (610 x 610 x 10)	ULT 1031	12 USG (45 L)	7 (3.5)	A
PSP600-041	24" x 48" x 4.75" (610 x 1219 x 121)	ULT 1032	24 USG (91 L)	11 (5.0)	A
PSP600-042	30" x 48" x 4.75" (762 x 1219 x 121)	ULT 1033	30 USG (113 L)	12 (5.5)	A
PSP600-043	24" x 36" x 4.75" (610 x 914 x 121)	ULT 1034	18 USG (68 L)	8 (3.5)	A
PSP600-044	36" x 36" x 4.75" (914 x 914 x 121)	ULT 1035	27 USG (102 L)	11 (5.0)	A
PSP600-045	40" x 48" x 3.5" (1016 x 1219 x 89)	ULT 1036	30 USG (113 L)	14 (6.5)	A



**A** Very Common Item - Good Stock

**B** Common Item - Moderate Stock

**C** Less Common Item - Call for Availability



# SPILL CONTAINMENT

## ULTRA-SPILL PALLETS

### Spill Containment Pallets protect against chemical spills or leaks

The Ultra-Spill Pallet is specially constructed to support heavy loads and designed to be easily used and transported. Its 100% Polyethylene construction makes it compatible with a wide range of chemicals, while its low-rise walls give more accessibility for pouring.

Helps meet spill containment regulations for up to four drums and comply with SPCC and EPA spill containment requirements.

### Constructed with the "The Cross of Life" Design

UltraTech Spill Containment Pallets are constructed with an innovative design called "The Cross of Life", which protects the Pallet's structural integrity while bearing a heavy load over time. As more weight is applied to the top of the pallet, the cross pulls the all-polyethylene sides towards the centre, instead of allowing them to sag outward.



PSP300-092



PSP300-051



PSP300-071

SKU	Description	Dimensions, in. (mm)	MPN	Containment Capacity, USG (L)	Availability
PSP300-092	P2 Pallet (2 drum), with drain	53" x 29" x 16.5" (1347 x 737 x 420)	ULT 1011	66 USG (250 L)*	<b>B</b>
PSP300-051	P4 Pallet (4 drum), with drain	53" x 53" x 11.75" (1347 x 1347 x 299)	ULT 1001	66 USG (250 L)**	<b>B</b>
PSP300-071	P4 ramp – non slip, PE and steel	56" x 29" x 8.75" (1410 x 724 x 305) UDL 700 lbs (318 kg)	ULT 0676	N/A****	<b>B</b>

\* P2 Pallet has Uniformly Distributed Load (UDL) of 3,000 lbs (1361 kg). Unit weight 63 lbs (29 kg)

\*\* P4 Pallet has Uniformly Distributed Load (UDL) of 6,000 lbs (2722 kg). Unit weight 90 lbs (41 kg)

**A** Very Common Item - Good Stock    **B** Common Item - Moderate Stock    **C** Less Common Item - Call for Availability

# SPILL CONTAINMENT

## ULTRA-SPILL PALLETS: ECONOMY MODEL

Ultra-Spill Pallet Economy Models have been developed specifically to meet tight budgets for spill containment products.

- 2-drum and 4-drum spill pallet models available.
- Applications for the all-polyethylene units include satellite waste collection and storage of virgin chemicals.
- Black color helps hide dirt and grime.
- Removable grating - makes clean-up quick and easy.
- Meets SPCC and EPA Container Storage Regulation 40 CFR 264,175 Spill Containment Regulations.
- **The first recycled spill pallet on the market**



PSP300-038



PSP300-002

SKU	Description	Dimensions, in. (mm)	MPN	Containment Capacity, USG (L)	Availability
PSP300-038	P2 Economy (2 drum), with drain	53" x 29" x 16.5" (1347 x 737 x 420)	ULT 2505	66 USG (250 L)*	<b>A</b>
PSP300-002	P4 Economy (4 drum), with drain	53" x 53" x 11.75" (1347 x 1347 x 299)	ULT 1001	66 USG (250 L)**	<b>A</b>

\* P2 Economy Pallet has Uniformly Distributed Load (UDL) of 1,500 lbs (681 kg). Unit weight 63 lbs (29 kg)

\*\* P4 Economy Pallet has Uniformly Distributed Load (UDL) of 3,000 lbs (1361 kg). Unit weight 85 lbs (39 kg)

**A** Very Common Item - Good Stock    **B** Common Item - Moderate Stock    **C** Less Common Item - Call for Availability

# SPILL CONTAINMENT

## ULTRA-SPILL PALLETS: PLUS MODEL

Combine high strength and low-profile features while meeting EPA container storage regulations.

- Low 8 ¾" profile positions drum funnels below eye level – significantly reduces the potential for hazardous fluids to splash into the eyes or face.
- Nearly 50% lower than standard spill pallets, drum handling is safer and less strenuous.
- Removable grates feature a non-slip surface.
- Superior weight capacity of the 4-drum model also allows use with IBCs.



PSP300-020



PSP300-069



PSP300-070



PSP300-071

SKU	Description	Dimensions, in. (mm)	MPN	Containment Capacity, USG (L)	Availability
PSP300-020	P1 Plus (1 drum), with drain	40" x 40" x 12" (1016 x 1016 x 305)	ULT 9607	62 USG (235 L)*	<b>B</b>
PSP300-069	P2 Plus (2 drum), with drain	66" x 40" x 8.75" (1664 x 1016 x 222)	ULT 9611	66 USG (250 L)**	<b>B</b>
PSP300-094	P3 Plus (3 drum), with drain	83" x 34.5" x 8.75" (2108 x 876 x 222)	ULT 9627	66 USG (250 L)***	<b>B</b>
PSP300-070	P4 Plus (4 drum), with drain	62" x 62" x 8.75" (1575 x 1575 x 222)	ULT 9631	74 USG (284 L)***	<b>B</b>
PSP300-071	P2, P3, P4 ramp – non slip, PE and steel	56" x 29" x 8.75" (1410 x 724 x 305) UDL 700 lbs (318 kg)	ULT 0676	N/A****	<b>B</b>

\* P1 Plus has Uniformly Distributed Load (UDL) of 800 lbs (363 kg). Unit weight 51 lbs (23 kg)

\*\* P2 Plus has Uniformly Distributed Load (UDL) of 4,500 lbs (2041 kg) . Unit weight 88 lbs (40 kg)

\*\* P3 Plus has Uniformly Distributed Load (UDL) of 4,500 (2,041 kg). Unit weight 90.0 (41.0 kg)

\*\* P4 Plus has Uniformly Distributed Load (UDL) of 9,000 lbs (4,082 kg). Unit weight 140 lbs (64 kg)

**A** Very Common Item - Good Stock    **B** Common Item - Moderate Stock    **C** Less Common Item - Call for Availability

# SPILL CONTAINMENT

## ULTRA-HARD TOPS

Safely store drums, tanks, totes and other containers outdoors. Polyethylene storage units keep the elements out and prevent unauthorized access.



Hard Tops - P1 Plus



Hard Tops - P2 Plus



Hard Tops - P4 Plus



Hard Tops - Plus Models



Hard Tops - P2



Hard Tops - P4



Hard Tops - IBC



Hard Tops - Twin IBC



Hard Tops - Modular IBC's

# SECONDARY CONTAINMENT

## FOAM SIDE WALL BERMS (FSW)

These collapsible secondary containment berms can be used to contain spills and leaks from vehicles, machinery, tanks, drums and other industrial equipment.

- RF welded construction made from heavy duty industrial fabrics.
- Lightweight, flexible, compact – folds up for storage.
- Simple and easy to clean and maintain, re-usable. Not set up – unfold and use immediately!

Part Number	L x W x H	Capacity (90%)	Shipping Weight	*	Availability
PSP200-1007	24" x 24" x 4"	34 L (9 USG)	1.1 kg (2.4 lbs)	●	A
PSP200-1008	24" x 24" x 4"	34 L (9 USG)	1.4 kg (3.0 lbs)	●	C
PSP200-1009	24" x 24" x 4"	34 L (9 USG)	1.5 kg (3.2 lbs)	●	A
PSP200-1010	24" x 24" x 6"	51 L (14 USG)	1.3 kg (2.9 lbs)	●	A
PSP200-1011	24" x 24" x 6"	51 L (14 USG)	1.6 kg (3.6 lbs)	●	C
PSP200-1012	24" x 24" x 6"	51 L (14 USG)	1.7 kg (3.8 lbs)	●	A
PSP200-1013	36" x 36" x 4"	77 L (20 USG)	1.7 kg (3.8 lbs)	●	A
PSP200-1014	36" x 36" x 4"	77 L (20 USG)	2.2 kg (4.8 lbs)	●	C
PSP200-1015	36" x 36" x 4"	77 L (20 USG)	2.3 kg (5.1 lbs)	●	A
PSP200-1016	36" x 36" x 6"	115 L (31 USG)	2.0 kg (4.4 lbs)	●	A
PSP200-1017	36" x 36" x 6"	115 L (31 USG)	2.5 kg (5.5 lbs)	●	C
PSP200-1018	36" x 36" x 6"	115 L (31 USG)	2.7 kg (5.9 lbs)	●	A
PSP200-1019	48" x 48" x 4"	136 L (36 USG)	2.5 kg (5.5 lbs)	●	A
PSP200-1020	48" x 48" x 4"	136 L (36 USG)	3.2 kg (7.0 lbs)	●	C
PSP200-1021	48" x 48" x 4"	136 L (36 USG)	3.4 kg (7.4 lbs)	●	A
PSP200-1022	48" x 48" x 6"	204 L (54 USG)	2.9 kg (6.4 lbs)	●	A
PSP200-1023	48" x 48" x 6"	204 L (54 USG)	3.6 kg (7.9 lbs)	●	C
PSP200-1024	48" x 48" x 6"	204 L (54 USG)	3.8 kg (8.4 lbs)	●	A



Folds Up For Compact Storage



Custom Silkscreening Available



3 Fabric Options To Choose From

- \* ● Black – 30 oz Chem Resistant    ● Orange 28 oz PVC  
 ● Yellow 22 oz PVC

A Very Common Item - Good Stock

B Common Item - Moderate Stock

C Less Common Item - Call for Availability



# SECONDARY CONTAINMENT

## L-ROD BERMS

These L-Rod secondary containment berms are fully collapsible, and can be rapidly deployed. Aluminum L-rods are used at regular intervals to support the walls of the berms, but are easily folded to allow for entry/exit of vehicles or machinery.

- RF welded construction made from 30 oz/yd<sup>2</sup> (1020 gsm) Chemical & Hydrocarbon Resistant polyester fabric, black.
- Aluminum L-Rods used to support the berm walls, but easily foldable for entry / exit and for storage.
- Simple and easy to clean and maintain, re-usable.

Part Number	L x W x H	Capacity (90%)	Shipping Weight	*	Availability
PSP200-3001	10' x 10' x 6"	1275 L (340 USG)	15 kg (33 lbs)	●	C
PSP200-3002	10' x 15' x 6"	1915 L (510 USG)	21 kg (46 lbs)	●	C
PSP200-3003	8' x 12' x 12"	2450 L (650 USG)	19 kg (41 lbs)	●	C
PSP200-3004	8' x 8' x 12"	1630 L (430 USG)	14 kg (31 lbs)	●	B
PSP200-3005	8' x 10' x 12"	2040 L (540 USG)	16 kg (36 lbs)	●	C
PSP200-3006	10' x 10' x 12"	2550 L (675 USG)	19 kg (42 lbs)	●	A
PSP200-3007	10' x 15' x 12"	3825 L (1010 USG)	26 kg (57 lbs)	●	B
PSP200-3008	10' x 20' x 12"	5100 L (1350 USG)	33 kg (73 lbs)	●	C
PSP200-3009	15' x 15' x 12"	5740 L (1520 USG)	35 kg (78 lbs)	●	C
PSP200-3010	20' x 20' x 12"	10200 L (2695 USG)	57 kg (125 lbs)	●	C
PSP200-3011	8' x 8' x 15"	2040 L (540 USG)	16 kg (34 lbs)	●	C
PSP200-3012	8' x 10' x 15"	2550 L (675 USG)	18 kg (40 lbs)	●	C
PSP200-3013	8' x 15' x 15"	3825 L (1010 USG)	25 kg (54 lbs)	●	C
PSP200-3014	10' x 10' x 15"	3190 L (845 USG)	21 kg (47 lbs)	●	C
PSP200-3015	10' x 15' x 15"	4780 L (1265 USG)	29 kg (63 lbs)	●	C
PSP200-3016	10' x 20' x 15"	6375 L (1685 USG)	36 kg (79 lbs)	●	C
PSP200-3017	15' x 20' x 15"	9565 L (2530 USG)	48 kg (106 lbs)	●	C
PSP200-3018	20' x 20' x 15"	12750 L (3370 USG)	60 kg (133 lbs)	●	C

\* ● Black – 30 oz Chem Resistant

**A** Very Common Item - Good Stock

**B** Common Item - Moderate Stock

**C** Less Common Item - Call for Availability



Fold Down L-Rods For Easy Entry / Exit



6, 12, or 15 Inch High Berm Sidewalls



Rapidly Set Up With No Tools



12' & 15' sidewalls  
sizes available

Custom sizes &  
configurations available  
upon request

EPA Clean Water Act  
Regulation 40 CFR 112.7  
+ 264.175

Custom logo /  
silk screening available

Optional drain fittings  
and handles



# SECONDARY CONTAINMENT

## RAPID RISE BERM

This specialized berm allows for easy entry and exit of vehicles or equipment. Sidewalls remain down during normal operations, loading and unloading. Vehicles and equipment can drive in and out with no set-up or take-down required. In the case of a spill, the foam ring around the top perimeter of the berm rises with the level of the spilled liquid.



- Fully welded construction made from 28 oz/yd<sup>2</sup> (950 gsm) COPOLYMER 2000 fabric, black.
- Lays flat until spill occurs – then foam ring around top perimeter will rise with fluid level.
- No tripping hazards, simple and easy to deploy, clean and maintain.
- 12 inch high walls provide high storage volume (up to triple capacity of similar footprint foam side wall berms).

Part Number	L x W x H	Capacity (90%)	Shipping Weight	*	Availability
PSP200-4014	4' x 6' x 1'	680 L (180 USG)	13 kg (29 lbs)	●	C
PSP200-4015	6' x 6' x 1'	1,020 L (270 USG)	16 kg (35 lbs)	●	C
PSP200-4016	10' x 10' x 1'	2,830 L (750 USG)	29 kg (63 lbs)	●	C
PSP200-4017	12' x 26' x 1'	8,830 L (2,335 USG)	68 kg (149 lbs)	●	C
PSP200-4018	15' x 50' x 1'	21,235 L (5,610 USG)	127 kg (278 lbs)	●	C
PSP200-4019	15' x 66' x 1'	28,030 L (7,405 USG)	162 kg (357 lbs)	●	C



Drive In / Out, No Set Up



Foam Ring Rises With Liquid Level



Simple and Easy to Deploy

\* ● Black – Copolymer 2000



12" & 15" sidewalls  
sizes available



Custom sizes &  
configurations available  
upon request



EPA Clean Water Act  
Regulation 40 Cfr 112.7  
+ 264.175



Custom logo /  
silk-screening available



Optional drain fittings  
and handles

**A** Very Common Item - Good Stock

**B** Common Item - Moderate Stock

**C** Less Common Item - Call for Availability



# SECONDARY CONTAINMENT

## COMPACT WALL BERM

This specialized berm is compact, lightweight, and portable

– it features struts in sleeves along the sidewall.

- Fully welded construction made from 28 oz/yd<sup>2</sup> (950 gsm) COPOLYMER 2000 fabric, black.
- Berm sidewall struts are permanently attached, no parts to misplace or lose.
- Compact design, rolls up for easy storage on trucks / hazmat vehicles.
- 12 inch high walls provide high storage volume (up to triple capacity of similar footprint foam side wall berms).



Part Number	L x W x H	Capacity	Shipping Weight	*	Availability
PSP200-4020	4" x 6" x 1"	680 L (180 USG)	13 kg (29 lbs)	●	C
PSP200-4021	6" x 6" x 1"	1,020 L (270 USG)	16 kg (35 lbs)	●	C
PSP200-4022	10" x 10" x 1"	2,830 L (750 USG)	29 kg (63 lbs)	●	C
PSP200-4023	12" x 60" x 1"	20,380 L (5,385 USG)	140 kg (309 lbs)	●	C
PSP200-4024	15" x 50" x 1"	21,235 L (5,610 USG)	127 kg (278 lbs)	●	C
PSP200-4025	15" x 66" x 1"	28,030 L (7,405 USG)	162 kg (357 lbs)	●	C



Easy Assembly, No Tools Required



Compact Size for Easy Storage



On Site Spill Containment

\* ● Black - Copolymer 2000



**A** Very Common Item - Good Stock

**B** Common Item - Moderate Stock

**C** Less Common Item - Call for Availability

# FLEXIBLE STORAGE

## FOLDABLE FRAME (FF) TANKS

Use our Portable Tanks for temporary storage of water, or hazardous materials or liquids. Tanks are lightweight, easily transportable, and can be assembled rapidly without tools. Foldable Frame (FF) tanks come complete with welded aluminum frame and fully RF welded tank liner.

- **Foldable Frame (FF)** - foldable aluminum frame with hinges. Liner is attached with grommets and lacing.
- **Fabrics** range from 22 oz to 28 oz PVC, or 30 oz chemical resistant XR5 or equivalent coated fabric.
- **Optional Accessories** include ground sheet, drain ports, bulkhead fittings, filtration.

Part Number	Category	Model	Capacity	Size	Weight	Fabric	Availability
PSP300-4012	PortableStorage	FF600	600 USG (2271 L)	6.5' x 6.5' x 30" (2 m x 2 m x 0.76 m)	21 kg	22 oz (750 gsm PVC)	C
PSP300-4011	PortableStorage	FF1000	1000 USG (3785 L)	8' x 8' x 30" (2.4 m x 2.4 m x 0.76 m)	28 kg	22 oz (750 gsm PVC)	B
PSP300-4014	PortableStorage	FF1500	1500 USG (5678 L)	10' x 10' x 30" (3 m x 3 m x 0.76 m)	39 kg	22 oz (750 gsm PVC)	C
PSP300-4015	PortableStorage	FF2100	2100 USG (7949 L)	12' x 12' x 30" (3.7 m x 3.7 m x 0.76 m)	47 kg	22 oz (750 gsm PVC)	C



Foldable Frame (FF), Open



Foldable Frame (FF), Closed

**A** Very Common Item - Good Stock    **B** Common Item - Moderate Stock    **C** Less Common Item - Call for Availability

# FLEXIBLE STORAGE

## COLLAPSIBLE FRAME (CF) TANKS

Use our Portable Tanks for temporary storage of water, or hazardous materials or liquids. Tanks are lightweight, easily transportable, and can be assembled rapidly without tools. Collapsible Frame (CF) tanks come complete with aluminum pipe frame and end connections, and fully RF welded tank liner.

- **Collapsible Frame (FF)** – aluminum pipe frame with cast aluminum corner fittings. Pipes fit through liner sleeves.
- **Fabrics** range from 22 oz to 28 oz PVC, or 30 oz chemical resistant XR5 or equivalent coated fabric.
- **Optional Accessories** include ground sheet, drain ports, bulkhead fittings, filtration.

Part Number	Category	Model	Capacity	Size	Weight	Fabric	Availability
PSP300-4016	PortableStorage	FF600	CF600 USG (2271 L)	6.5' x 6.5' x 30" (2 m x 2 m x 0.76 m)	27 kg	22 oz (750 gsm PVC)	C
PSP300-4017	PortableStorage	FF1000	CF1000 USG (3785 L)	8' x 8' x 30" (2.4 m x 2.4 m x 0.76 m)	32 kg	22 oz (750 gsm PVC)	B
PSP300-4018	PortableStorage	FF1500	CF1500 USG (5678 L)	10' x 10' x 30" (3 m x 3 m x 0.76 m)	43 kg	22 oz (750 gsm PVC)	C
PSP300-4019	PortableStorage	FF2100	CF2100 USG (7949 L)	12' x 12' x 30" (3.7 m x 3.7 m x 0.76 m)	52 kg	22 oz (750 gsm PVC)	C



Collapsible Frame (CF), Open



Collapsible Frame (CF), Open

# MARINE SPILL CONTAINMENT

## FOAM FILLED OIL CONTAINMENT BOOMS

- **Mini, Contractor, and RiverBooms** have solid cylindrical (round) foam logs for maximum buoyancy.
- **RiverBooms** all have top tension member (galvanised steel cable or high-tenacity webbing) for an additional strength in fast flowing waters and currents.
- **FenceBooms** have solid flat (rectangular) foam planks to minimise transport and storage volumes. Optional top tension member for added strength and stability in flowing waters.

Part Number	Category	Type	Model	Overall Height	Availability
PSP800-003	Containment Boom	MiniBoom	3/4	7"	<b>B</b>
PSP800-004	Containment Boom	MiniBoom	4/6	10"	<b>B</b>
PSP800-005	Containment Boom	ContractorBoom	6/6	12"	<b>B</b>
PSP800-006	Containment Boom	ContractorBoom	6/12	18"	<b>B</b>
PSP800-007	Containment Boom	RiverBoom	6/6 w/ top cable	12"	<b>B</b>
PSP800-008	Containment Boom	RiverBoom	6/12 w/ top cable	18"	<b>B</b>
PSP800-009	Containment Boom	FenceBoom	18	18"	<b>B</b>
PSP800-010	Containment Boom	PermaBoom	24	24" Overall Height	<b>B</b>

- **Common Features:** 50 foot section length, ASTM connectors, galv steel ballast chain, 22 oz PVC fabric



PermaBoom



RiverBoom



FenceBoom

- A** Very Common Item - Good Stock    **B** Common Item - Moderate Stock    **C** Less Common Item - Call for Availability

# MARINE SPILL CONTAINMENT

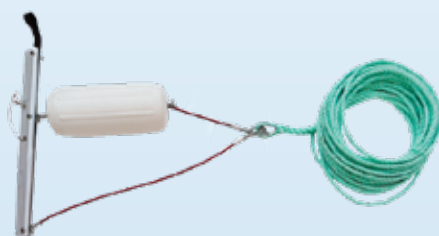
## OIL CONTAINMENT BOOMS & ACCESSORIES

Pacific Spill Supply offers a variety of spill response accessories, including towing lines, boom connectors, bridles, anchor systems, mooring buoys, and related products. Contact us for details.

Part Number	Category	Type	Model	Specifications	Availability
PSP800-011	Containment Boom	TowBridle	70072	c/w Boom Connector, cable bridle, 25 m towing line, float	A
PSP800-012	Containment Boom	Anchor	Danforth, 25 lb	Galvanized Steel	A
PSP800-013	Containment Boom	Anchor Assembly	Deluxe	c/w 25 lb anchor, chain, anchor line, mooring buoy, trip line and marker buoy	B



Danforth Style Anchor



TowBridle



Deluxe Anchor Assembly

**A** Very Common Item - Good Stock

**B** Common Item - Moderate Stock

**C** Less Common Item - Call for Availability



# REGULATIONS

## SUMMARY OF CRITICAL REGULATIONS



### SUMMARY OF CANADIAN CRITICAL REGULATIONS



EPA Container Storage Regulation 40 CFR 264.175  
Stormwater Management Regulations 40 CFR 122.26  
Spill Prevention, Control, & Countermeasures Rule 40 CFR 112  
ADA Accessibility Guidelines for Buildings & Facilities (ADAAG)  
Regulation Checklist

[spillcontainment.com](http://spillcontainment.com)



# Canadian Secondary Containment Requirements

## SUMMARY:

- The Code is a model set of technical requirements designed to protect the environment from leaking aboveground storage tank systems. The CCME advocates that the recommendations in this Code be adopted as minimum requirements by federal, provincial and territorial regulatory authorities. Secondary Containment Requirements of the Code include the following:

### 1. A secondary containment system shall be:

- A single-wall, bottom storage tank placed entirely within a diked area, with an impermeable barrier in the floor of the containment area and in the dike walls, or
- A single-wall, double-bottom storage tank placed entirely within a diked area, with an impermeable barrier in the floor of the containment area around the storage tank and in the dike walls, but not underneath the storage tank.

### 2. Secondary containment shall be in conformance with the following:

Used oil storage tanks that are manually filled

- ULC/ORD-C124.23, "Aboveground Waste Oil Tanks" or
- ULC-S652, "Standard for Tank Assemblies for Collection of Used Oil"

### 3. Aboveground Storage Tank Secondary Containment Maintenance (per the Technical Standards and Safety Act, 2000, S. O. 2000, c. 16):

Used oil storage tanks that are manually filled

- Secondary containment shall be inspected on a regular basis, not less than once per week, to ensure the removal of any accumulated surface water, snow, drums, portable containers, objects or product that would reduce the fluid volume capacity to provide a volume of liquid at least 10% greater than the volume of the tank, or a volume of liquid not less than the volume of the largest tank plus 10% of the aggregate volume of all the other tanks, or 10% greater than the volume of the largest tank, whichever is greater (dike with more than one tank).
- Where secondary containment is provided with valves that allow the removal of accumulated surface water or product, they should be closed and locked when not engaged in a supervised draining operation, and the valve positions must be clearly marked whether opened or closed.
- Controls for the drainage system shall be accessible under fire exposure conditions and located outside the secondary containment area.
- Underground piping up to 75 mm nominal pipe diameter:
- Shall have secondary containment.

## Alberta Waste: Control Regulation 192/1996

This regulation does not specify how much containment is required. A person who stores hazardous waste shall store it in an amount and manner so that:

- at least secondary containment is provided for liquid hazardous waste, and there are no openings in the secondary containment system that provide a direct connection to the area surrounding the system and routine inspection of the site can be performed.

## Manitoba Dangerous Goods Handling and Transportation D12-M.R. 188/2001

Containment dikes and other protection:

Where, in the opinion of the director or an environmental officer, an aboveground storage tank system is situated in a location such that a release of petroleum product or an allied petroleum product could create a risk to surface water or groundwater quality, or to public health or safety,

## New Brunswick: Department of Environment

There is no specific government document available. The requirements for spill prevention and containment for chemicals/hazardous waste storage are issued under a Certificate of Approval by the Department of Environment and Conservation.

Areas in which chemicals are used or stored shall have impermeable floors and dikes or curbs and shall not have a floor drain system, nor shall they discharge to the environment. Areas inside the dikes or curbs shall have an effective secondary containment capacity of at least 110% of the chemical storage tank capacity, in the case of a single storage container. If there is more than one storage container, the diked area shall be able to retain no less than 110% of the capacity of

## Newfoundland and Labrador: Department of Environment

There is no specific government document available. The requirements for spill prevention and containment for chemicals/hazardous waste storage are issued under a Certificate of Approval by the Department of Environment and Conservation.

Areas in which chemicals are used or stored shall have impermeable floors and dikes or curbs and shall not have a floor drain system, nor shall they discharge to the environment. Areas inside the dikes or curbs shall have an effective secondary containment capacity of at least 110% of the chemical storage tank capacity, in the case of a single storage container. If there is more than one storage container, the diked area shall be able to retain no less than 110% of the capacity of

### 5. Underground secondary containment piping shall:

- Be constructed and installed in conformance with ULC/ORD-C107.7
- Be constructed and installed in conformance with ULC/ORD-C107.4
- Consist of a single-wall piping contained within a synthetic membrane liner manufactured and installed in conformance with ULC/ORD-C58.9

- Consist of a single-wall fiberglass-reinforced plastic, or single-wall steel piping, contained within a duct designed, constructed and installed in conformance with ULC/ORD-C107.19

### 6. Underground piping larger than 75 mm nominal pipe diameter shall have:

- Secondary containment with interstitial space leak detection, or b) a precision leak test in conformance with the NVC every two years beginning in the fifth year of operation, or c) leak detection in conformance with ULC/ORD-C58.14, "Nonvolumetric Leak Detection Devices for Underground Flammable Liquid Storage Tanks"

### 7. Secondary containment impermeable barriers:

Shall conform to NFC, Subsection 4.3.7 in addition to the following performance specifications:

- ULC/ORD-C58.9 using material compatible with the product being stored and installed so that: Product entering the interstitial space flows to a containment sump and the liner is sealed to the perimeter of the storage tanks or pad when the liner is not installed under the tank.

### 8. Concrete barriers shall:

- Be designed and installed according to good engineering practices to meet the expected loads without fracture, have expansion joints located at least every 6 m, have expansion joints sealed with a sealant that is compatible with the product being stored and be graded to allow collection of liquids in the interstitial space.

### 9. Clay barriers shall:

- Be installed in accordance with good engineering practice, be a minimum of 300 mm thick, be chemically compatible with native or cover soil, be covered with a minimum of 300 mm of material to prevent dryout and be graded to allow liquid to collect in the interstitial space

### 10. Steel barriers shall:

- Be a minimum of 4.5 mm thick, have a corrosion protection designed and installed under the direction of a corrosion expert and be sloped to allow liquid to collect in the interstitial space. Provincial and Territorial Departments have the authority to regulate storage tanks and storage requirements.

## British Columbia: Hazardous Waste Regulation B.C. Reg. 63/2009, April 1, 2009

The owner of a storage facility where free liquid hazardous waste is stored in containers or tanks must:

- provide space to allow for manual, visual inspection for leaks.
- provide and maintain an impervious containment system sufficient to hold the larger of 110% of the largest volume of free liquid hazardous waste in any given container or tank, or 25% of the total volume of free liquid hazardous waste in storage.

the director or environment officer may order the owner of the system to:

- install secondary containment in respect of the system or
- install any other means of protection referred to in the "Environmental Code of Practice for Aboveground Storage Tank Systems Containing Petroleum Products" in respect of the system.

the largest container or 100% of the capacity of the largest container plus 10% of the aggregate capacity of all additional containers, whichever is greater. These diked areas shall be kept clear of material that may compromise the capacity of the dike system. Once a year, the dikes shall be visually inspected for their liquid containing integrity, and repairs shall be made when required. Once every ten years, the dikes shall be inspected by a means other than visual inspection for their liquid containing integrity and repairs shall be made when required.

Refueling and maintenance of vehicles and equipment shall, whenever possible, be undertaken on a prepared impermeable surface with an oil containment or collection system.

the largest container or 100% of the capacity of the largest container plus 10% of the aggregate capacity of all additional containers, whichever is greater. These diked areas shall be kept clear of material that may compromise the capacity of the dike system. Once a year, the dikes shall be visually inspected for their liquid containing integrity, and repairs shall be made when required. Once every ten years, the dikes shall be inspected by a means other than visual inspection for their liquid containing integrity and repairs shall be made when required.

Refueling and maintenance of vehicles and equipment shall, whenever possible, be undertaken on a prepared impermeable surface with an oil containment or collection system.

**Nova Scotia:** No actual regulation that specifies secondary containment. Requirements below are included in all Dangerous Goods Approvals)

All containers or tanks shall be completely surrounded by secondary containment sized to contain 110% of the volume of the largest tank or container in the specifically contained area or 100% of the volume of the largest tank or container plus 10% of the aggregate capacity of all

other containers or tanks in the contained area, whichever is greater.

All transfers of bulk dangerous goods shall be conducted using containment pads or drip pans to capture spills or drips during transfer operations to/from railcars and other approved containers.

**Ontario:** Guidelines for Environmental Protection Measures at Chemical and Waste Storage Facilities

Secondary containment – general: Containment systems should be installed around all liquid chemical or waste storage containers to collect and contain a leak, spill or overflow from the tank, connections, vents or pressure relief devices. Containment systems should be designed such that the horizontal trajectory of a potential leak from a tank will be confined within the impoundment. As a guide, the perpendicular distance from the tank face to the top of the inside face of any containment should be a minimum of half the height of the tank above the top of the containment wall. The secondary containment system should isolate and protect the tank from vehicular traffic, fire, and spills of incompatible materials that might occur in adjacent storage or work areas. Containment areas may be emptied manually, by pumps or by ejectors. However, all should be manually activated and the condition of the accumulation should be examined before starting to be sure no contaminants will be discharged into the environment. Accumulations from a secondary containment system should be treated or decontaminated in accordance with local requirement for discharges to sanitary sewer or in accordance with the site certificate of approval and sector specific Effluent Monitoring. Containments should be sized so as to provide a minimum impoundment volume equal to the greater of 110% of the volume of the largest tank, 100% of the volume of the largest tank plus the greater of 10% of the volume of the largest tank or 10% of the aggregate volume of all remaining tanks.

Secondary containment – general: Containment systems should be installed around all liquid chemical or waste storage containers to collect and contain a leak, spill or overflow from the tank, connections, vents or pressure relief devices. Containment systems should be designed such that the horizontal trajectory of a potential leak from a tank will be confined within the impoundment. As a guide, the perpendicular distance from the tank face to the top of the inside face of any containment should be a minimum of half the height of the tank above the top of the containment wall. The secondary containment system should isolate and protect the tank from vehicular traffic, fire, and spills of incompatible materials that might occur in adjacent storage or work areas. Containment areas may be emptied manually, by pumps or by ejectors. However, all should be manually activated and the condition of the accumulation should be examined before starting to be sure no contaminants will be discharged into the environment. Accumulations from a secondary containment system should be treated or decontaminated in accordance with local requirement for discharges to sanitary sewer or in accordance with the site certificate of approval and sector specific Effluent Monitoring. Containments should be sized so as to provide a minimum impoundment volume equal to the greater of 110% of the volume of the largest tank, 100% of the volume of the largest tank plus the greater of 10% of the volume of the largest tank or 10% of the aggregate volume of all remaining tanks.

Construction Requirements: All containment areas should be structurally sound, impermeable

and able to withstand chemical deterioration and structural stresses from internal and external causes. Containments in flood plains should be designed and constructed to withstand structural damage and overtopping by 1 in 100 year run-off or a storm event. The secondary containment system should be designed and constructed, coated or lined with a permeability rate to the material stored of  $1 \times 10^{-6}$  cm/sec or less and be chemically compatible with the contents of all tanks within the containment area. Tank containment systems should not be located over any existing piping or drainage system whether active or inactive. The floor of the containment should have a minimum slope of 1.5% towards a sump to ensure that any runoff or spilled material will be contained. There should be no sewer connections from any containment area, other than through the containment valve. There should be no piping through the basin floor. If a synthetic liner is used as a secondary containment system, synthetic liners should be at least 60mm in thickness and should be made of a material that will not deteriorate in an underground environment. All punctures, tears or inadequate seams in the liner should be repaired prior to backfilling. The liner should be installed with a slope to the sump of at least 1.5%. All containments should be equipped with a sump with a minimum capacity of  $1.5 \text{ m}^3$  from which runoff or spilled material may be pumped or drained by means of a containment valve. Containment valves should be locking position indicator valves. They should be normally locked in the closed position with access restricted.

Underground Installations: When using a double-walled tank for a secondary containment system, the tank should be designed such that the outer wall can contain a release from the inner wall and it should enclose the entire primary tank. The interstitial space should be regularly monitored. The outer wall should be protected against corrosion similar to the inner tank to prevent rupture. The outer wall should be designed to handle the maximum pressure of the inner wall. If a vault is used as a secondary containment system, the vault should be a continuous structure with a chemical resistant water stop used at all joints. For underground installations, appropriate signs should be put in place to indicate the location of the underground facility. Also, an underground barrier should be put in place to prevent possible rupture during excavations that could otherwise encroach upon the underground system.

Piping and Pumps: Pipes draining containment systems should be capable of handling the maximum potential water spray cooling and fire protection system flow within the containment. All piping and containment valves should be protected from freezing. Any coupling or open-ended valve used for making a transfer should be located within a secondary containment system of the transfer station.

Transfer, Loading and Off-Loading: The ground around the loading/unloading system area should be sloped a minimum of 1.5% toward a containment system

**Prince Edward Island:** Guidelines for Environmental Protection Measures at Chemical and Waste Storage Facilities

No person shall install an aboveground single-wall storage tank with a capacity of 2300 liters or greater without a secondary containment system.

The volumetric capacity of the containment system required shall be: a) in the case of one storage tank, 110% of the petroleum storage capacity of the storage tank or b) in the case of a multi-tank storage tank system, 110% of the petroleum storage capacity of the largest storage tank.

The containment capacity of the containment system required shall be calculated after deducting

the exterior displacement volume of the storage tanks, with the exception of the largest tank, in order to allow for the displacement volume occupied by the storage tanks.

No person shall install an aboveground storage tank or storage tank system in a manner that may result in such a storage tank, or storage tank system being in contact with the ground, unless an adequate corrosion control system is installed at the same time to protect the portion of any storage tank that may be in contact with the ground and such storage tank or storage tank system complies with the NFC of Canada.

**Quebec O.C. 1310-97, s. 33 and O. C. 1310-97, s. 34**

Every building used to store residual hazardous materials shall be built in such a way as to protect what is stored from any alteration caused by water, snow, frost or heat. The floor shall be impermeable, not liable to be attacked by the stored material and able to support that material. In addition, the layout of the storage area shall be such that leakage or spillage can be contained.

Every shelter under which residual hazardous materials are stored shall have at least 3 sides, a roof and a floor. The floor shall be impermeable, not liable to be attacked by the stored material and able to support that material. The floor shall rise on each side to form an impermeable basin able to hold the greater of the following volumes: 25% of the total capacity of all the receptacles stored therein and 125% of the capacity of the largest receptacle.

**Saskatchewan:** The Hazardous Substance and Waste Dangerous Goods Regulation

As of April 1, 1995, all waste dangerous goods storage facilities with 500 kilograms/500 liters of waste oil or antifreeze at one time or 100 kilograms/100 liters of all other waste dangerous goods combined, must comply with the Regulation.

Waste dangerous goods container storage areas must be equipped with some form of secondary containment to prevent waste dangerous goods from entering any storm, sanitary sewage or water supply system or from contaminating any other area. The secondary containment must be impermeable (leak tight) and constructed of a material compatible with the waste being stored.

Tanks should be equipped with secondary containment. Acceptable containment systems

include: double wall tanks, containment dikes constructed from steel, concrete, earthen dike and liner systems, or other systems which meet the following minimum requirements:

- The containment material must be compatible with the product stored
- The capacity of the containment for single tanks must be a minimum of 110% of the capacity of the tank
- The containment must be leak tight
- The containment must be constructed so as to be strong enough to hold the capacity of the storage tank in the event of a leak

**Northwest Territories, Nunavut & Yukon Territories**

The CCME "Environmental Code of Practice for Aboveground Storage Tank Systems Containing Petroleum Products"

# Regulation Checklist

OUTSIDE AREAS	
	Product Recommendations
<input type="checkbox"/> Are drums and totes properly stored outside per federal spill containment and stormwater regulations?	Hard Tops
<input type="checkbox"/> Are outside drains protected from trash, debris and hydrocarbons per the federal stormwater guidelines?	Drain Guards
<input type="checkbox"/> Are drain covers (Drain Seals) and Spill Berms available where hazardous fluids are stored for quick deployment to cover drains from spills to prevent costly fines?	Drain Seals and Spill Berms
<input type="checkbox"/> Are you transferring fluids via rail car in your plant or facility?	Track Pans
<input type="checkbox"/> Do you have tanker trucks or other equipment and tanks that need containment for compliance?	Containment Berms
<input type="checkbox"/> Are smoking receptacles provided at entrances and break areas?	Smoke Stops
<input type="checkbox"/> Are bollards and posts protected from the elements? (Reduce maintenance costs from painting while maintaining high-visibility)	Post Protectors

MAINTENANCE AREAS	
	Product Recommendations
<input type="checkbox"/> Are utility cords covered and protected to prevent trip hazards as well as protecting the cords from contraction causing wire issues and potential fires?	Sidewinders
<input type="checkbox"/> Are there practices in place to capture ceiling drips and leaks from ruining expensive equipment and for preventing wet/slip conditions in the workplace?	Drip Diverters
<input type="checkbox"/> Are smaller containers in and around facilities properly stored with containment for leaks and spills?	Utility Trays

INSIDE AREAS	
	Product Recommendations
<input type="checkbox"/> Are you properly storing drums of hazardous liquids that require secondary containment on Spill Pallets?	Spill Pallets
<input type="checkbox"/> Do you have requirements or initiatives to use products that are "green" or made with recycled content?	Economy 2/4 Drum Spill Pallets
<input type="checkbox"/> Are you trying to store 55 Gallon drums on small spill decks without the proper containment capacity for compliance? Here are the only stand alone Spill Decks on the market.	Spill Deck Bladder Systems
<input type="checkbox"/> Are you storing multiple drums in one area of your plant? The only way to make the decks compliant is to connect the decks with bulkhead fittings to route the fluids amongst the connected decks, not just by attaching.	Modular Spill Decks
<input type="checkbox"/> Are you storing IBC totes in your plant without proper spill containment? Totes are typically 275 Gallons or 330 Gallons. IBC Spill Pallet Plus offers 360 gallons of containment to meet SPCC Regulations.	IBC Spill Pallet Plus
<input type="checkbox"/> If you are storing multiple IBC Totes in your facility that require spill containment for hazardous fluids?	Modular IBC Spill Pallets
<input type="checkbox"/> Are you providing multiple overpacks/salvage drums on-site for leaking drums and/or for cleaning up soiled sorbents in the event of a spill clean up?	Overpack Plus
<input type="checkbox"/> Are you storing used batteries and concerned about leaking battery acids?	Containment Trays
<input type="checkbox"/> Are you storing drums up on racking in your warehouse or facility?	Rack Sump
<input type="checkbox"/> Adding funnels and accessories to all drums on Spill Pallets decreases the likelihood of spilling fluids on the facility floor or working area.	Burp Free and Bung Access Funnels
<input type="checkbox"/> You can encapsulate spills on facility floors with Spill Berms to reduce the area in which spill clean up occurs. Also the ability to block off facility drains from spills.	Spill Berms and Drain Seals
<input type="checkbox"/> Do you have fleet trucks or field truck maintenance teams?	Pop Up Pools



**ULTRATECH**  
INTERNATIONAL, INC.

UltraTech International, Inc. · 11542 Davis Creek Court, Jacksonville, Florida 32256 USA  
(800) 353-1611 · 1-904-292-1611 · spillcontainment.com

# PART NUMBER INDEX

Part Number	Item Category	Page # Reference
PSP100-002	Absorbents	6
PSP100-006	Absorbents	7
PSP100-007	Absorbents	12
PSP100-008	Absorbents	14
PSP100-009	Absorbents	14
PSP100-010	Absorbents	15
PSP100-011	Absorbents	15
PSP100-013	Absorbents	13
PSP100-014	Absorbents	14
PSP100-015	Absorbents	12
PSP100-016	Absorbents	17
PSP100-017	Absorbents	17
PSP100-018	Absorbents	17
PSP100-019	Absorbents	19
PSP100-022	Absorbents	25
PSP100-023	Absorbents	19
PSP100-024	Absorbents	19
PSP100-027	Absorbents	7
PSP100-028	Absorbents	16
PSP100-029	Absorbents	16
PSP100-030	Absorbents	16
PSP100-031	Absorbents	16
PSP100-032	Absorbents	6
PSP100-035	Absorbents	7
PSP100-036	Absorbents	17
PSP100-037	Absorbents	14
PSP100-038	Absorbents	14
PSP100-039	Absorbents	6
PSP100-040	Absorbents	14
PSP100-044	Absorbents	14
PSP100-051	Absorbents	18
PSP100-052	Absorbents	18
PSP100-060	Granulars	26, 36

Part Number	Item Category	Page # Reference
PSP100-066	Absorbents	18
PSP100-067	Absorbents	18
PSP100-070	Absorbents	6
PSP100-073	Absorbents	16
PSP100-074	Granulars	26
PSP100-076	Absorbents	17
PSP100-080	Absorbents	15
PSP100-081	Absorbents	9
PSP100-082	Absorbents	11
PSP100-083	Absorbents	16
PSP100-084	Absorbents	16
PSP100-085	Absorbents	18
PSP100-086	Absorbents	18
PSP100-090	Absorbents	14
PSP100-094	Absorbents	15
PSP100-097	Absorbents	15
PSP100-106	Absorbents	25
PSP100-107	Absorbents	20
PSP100-108	Absorbents	21
PSP100-109	Absorbents	21
PSP100-111	Absorbents	24
PSP100-113	Absorbents	7
PSP100-116	Absorbents	20
PSP100-117	Absorbents	20
PSP100-119	Granulars	27
PSP100-121	Absorbents	6
PSP100-122	Spill Kits	36
PSP100-127	Absorbents	21
PSP100-129	Absorbents	21
PSP100-131	Absorbents	24
PSP100-132	Absorbents	24
PSP100-139	Granulars	26
PSP100-140	Absorbents	9

# PART NUMBER INDEX

Part Number	Item Category	Page # Reference
PSP100-143	Absorbents	15
PSP100-154	Neutralizers	28
PSP100-155	Neutralizers	28
PSP100-168	Granulars	27
PSP100-176	Absorbents	6
PSP100-177	Absorbents	7
PSP100-180	Absorbents	8
PSP100-181	Absorbents	10
PSP100-185	Neutralizers	28
PSP100-186	Neutralizers	28
PSP100-187	Neutralizers	28
PSP100-188	Neutralizers	28
PSP100-192	Absorbents	22
PSP100-193	Absorbents	22
PSP100-194	Absorbents	22
PSP200-1007	Secondary Containment	46
PSP200-1008	Secondary Containment	46
PSP200-1009	Secondary Containment	46
PSP200-1010	Secondary Containment	46
PSP200-1011	Secondary Containment	46
PSP200-1012	Secondary Containment	46
PSP200-1013	Secondary Containment	46
PSP200-1014	Secondary Containment	46
PSP200-1015	Secondary Containment	46
PSP200-1016	Secondary Containment	46
PSP200-1017	Secondary Containment	46
PSP200-1018	Secondary Containment	46
PSP200-1019	Secondary Containment	46
PSP200-1020	Secondary Containment	46
PSP200-1021	Secondary Containment	46
PSP200-1022	Secondary Containment	46
PSP200-1023	Secondary Containment	46
PSP200-1024	Secondary Containment	46

Part Number	Item Category	Page # Reference
PSP200-3001	Secondary Containment	47
PSP200-3002	Secondary Containment	47
PSP200-3003	Secondary Containment	47
PSP200-3004	Secondary Containment	47
PSP200-3005	Secondary Containment	47
PSP200-3006	Secondary Containment	47
PSP200-3007	Secondary Containment	47
PSP200-3008	Secondary Containment	47
PSP200-3009	Secondary Containment	47
PSP200-3010	Secondary Containment	47
PSP200-3011	Secondary Containment	47
PSP200-3012	Secondary Containment	47
PSP200-3013	Secondary Containment	47
PSP200-3014	Secondary Containment	47
PSP200-3015	Secondary Containment	47
PSP200-3016	Secondary Containment	47
PSP200-3017	Secondary Containment	47
PSP200-3018	Secondary Containment	47
PSP200-4014	Secondary Containment	48
PSP200-4015	Secondary Containment	48
PSP200-4016	Secondary Containment	48
PSP200-4017	Secondary Containment	48
PSP200-4018	Secondary Containment	48
PSP200-4019	Secondary Containment	48
PSP200-4020	Secondary Containment	49
PSP200-4021	Secondary Containment	49
PSP200-4022	Secondary Containment	49
PSP200-4023	Secondary Containment	49
PSP200-4024	Secondary Containment	49
PSP200-4025	Secondary Containment	49
PSP300-002	Spill Containment	43
PSP300-020	Spill Containment	44
PSP300-038	Spill Containment	43

# PART NUMBER INDEX

Part Number	Item Category	Page # Reference
PSP300-051	Spill Containment	42
PSP300-069	Spill Containment	44
PSP300-070	Spill Containment	44
PSP300-071	Spill Containment	44
PSP300-092	Spill Containment	42
PSP300-4012	Marine Spill Containment	52
PSP300-4011	Marine Spill Containment	52
PSP300-4014	Marine Spill Containment	52
PSP300-4015	Marine Spill Containment	52
PSP300-4016	Marine Spill Containment	52
PSP300-4017	Marine Spill Containment	52
PSP300-4018	Marine Spill Containment	52
PSP300-4019	Marine Spill Containment	52
PSP500-003	Spill Kits	36
PSP500-025	Spill Kits	36
PSP600-001	Drain & Stormwater	39
PSP600-002	Drain & Stormwater	39
PSP600-003	Drain & Stormwater	40
PSP600-005	Drain & Stormwater	38
PSP600-008	Drain & Stormwater	40
PSP600-010	Drain & Stormwater	37
PSP600-013	Drain & Stormwater	37
PSP600-018	Drain & Stormwater	36, 37
PSP600-019	Drain & Stormwater	36, 37
PSP600-021	Drain & Stormwater	37
PSP600-022	Drain & Stormwater	37
PSP600-023	Drain & Stormwater	37
PSP600-028	Drain & Stormwater	37
PSP600-032	Drain & Stormwater	37
PSP600-040	Spill Containment	41
PSP600-041	Spill Containment	41
PSP600-042	Spill Containment	41
PSP600-043	Spill Containment	41

Part Number	Item Category	Page # Reference
PSP600-044	Spill Containment	41
PSP600-045	Spill Containment	41
PSP600-061	Absorbents	25
PSP600-065	Absorbents	25
PSP600-082	Drain & Stormwater	40
PSP700-002	Spill Kits	31
PSP700-005	Spill Kits	31
PSP700-006	Spill Kits	31
PSP700-008	Spill Kits	32
PSP700-010	Spill Kits	35
PSP700-011	Spill Kits	35
PSP700-012	Spill Kits	35
PSP700-013	Spill Kits	35
PSP700-014	Spill Kits	35
PSP700-015	Spill Kits	35
PSP700-023	Spill Kits	32
PSP700-024	Spill Kits	32
PSP700-025	Spill Kits	32
PSP700-026	Spill Kits	32
PSP700-027	Spill Kits	32
PSP700-028	Spill Kits	32
PSP700-029	Spill Kits	32
PSP700-030	Spill Kits	32
PSP700-064	Spill Kits	34
PSP700-065	Spill Kits	34
PSP700-066	Spill Kits	34
PSP700-067	Spill Kits	34
PSP700-069	Spill Kits	33
PSP700-085	Spill Kits	33
PSP700-086	Spill Kits	33
PSP700-087	Spill Kits	33
PSP700-158	Spill Kits	31
PSP700-211	Spill Kits	34



# PART NUMBER INDEX

Part Number	Item Category	Page # Reference
<b>PSP700-212</b>	Spill Kits	34
<b>PSP700-222</b>	Spill Kits	34
<b>PSP700-223</b>	Spill Kits	34
PSP700-236	Spill Kits	34
PSP700-263	Spill Kits	34
PSP700-264	Spill Kits	34
PSP800-003	Marine Spill Containment	50
PSP800-004	Marine Spill Containment	50
PSP800-005	Marine Spill Containment	50
PSP800-006	Marine Spill Containment	50
PSP800-007	Marine Spill Containment	50
PSP800-008	Marine Spill Containment	50
PSP800-009	Marine Spill Containment	50
PSP800-010	Marine Spill Containment	50
PSP800-011	Marine Spill Containment	51
PSP800-012	Marine Spill Containment	51
PSP800-013	Marine Spill Containment	51
PSP900-001	Spill Kits	36
PSP900-005	Spill Kits	36
PSP900-006	Spill Kits	36
PSP900-009	Spill Kits	36
PSP900-025	Spill Kits	36
PSP900-044	Absorbents	25

## RECENT ORDERS

[illegible]

## This image shows a full page of white paper with horizontal blue ruling lines. The lines are evenly spaced and run across the width of the page. There is no handwriting or other markings on the paper.





PACIFIC SPILL SUPPLY

Distributed By

**Sales/Ordering: 604-244-7745**  
**Call 24 hrs 1-855-269-7745 (1-855-ANY-SPIL)**  
**[www.pacificspillsupply.com](http://www.pacificspillsupply.com)**

Version: 2018-A

